

インドネシア水インフラセミナー配付資料②

Sustainable Sewerage Management for Indonesia

Swing Corporation

All Rights Reserved by Swing Corporation



Agenda

1. Company Overview
2. Valuable Services
3. About Swing
4. Overseas Track Records
5. About PT. Swing Indonesia =Swing activity in your country=
6. Technologies `Wastes change to valuables`
7. KOBE Harvest Project =Phosphorus removal=
8. Mizu-Mirai Hiroshima =First PPP Works in Japan=

All Rights Reserved by Swing Corporation



Company Overview



=History of Swing Corporation=

- 1912 Inokuchi Type Machinery Office founded by Issei Hatakeyama
- 1920 **EBARA Corporation established**
- 1956 EBARA-INFILCO established with INFILCO Inc(USA)
- 1994 EBARA-INFILCO was merged into EBARA Corporation
- 2009 **All EBARA's water related business unit integrated to Ebara Engineering Service (EES)**
- 2010 Mitsubishi and JGC joined EES
- 2011 EES has a new name `Swing Corporation` as of April 1

- ◆ **Company Name**
Swing Corporation
- ◆ **Turnover (Non-Consolidated)**
US\$741 million (FY2012)
- ◆ **Number of Employees**
3,148 (as of April 1, 2013)
- ◆ **Main Customers**
The National Government, Municipalities, and Private Companies

April 1,
2011

king = (Swing)

Our corporate name implies **S**ustainable **W**ater + ing, in which "ing" intends continuing action for further improvement of the water environment.

※Officially succeeded all the past EBARA's water business track records

All Rights Reserved by Swing Corporation



Valuable Services

Abundant experience and accumulated technologies for Water treatment business



All Rights Reserved by Swing Corporation

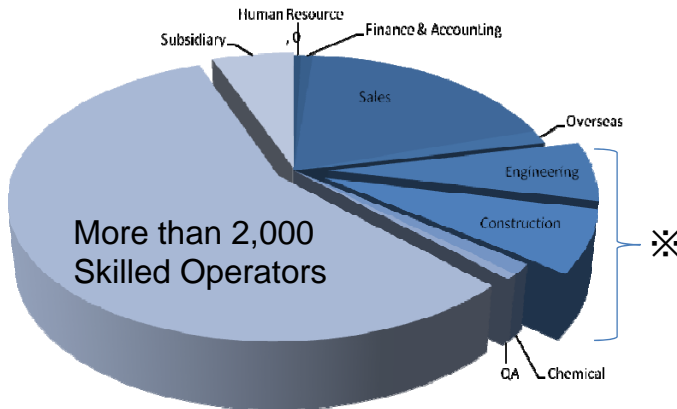


Swing - Over 2,000 Operators, 50 R&D staffs & 450 engineers

Abundant experience in EPC and O&M

Accumulated know-how and network

Well developed emergency operation (flood, earthquake)

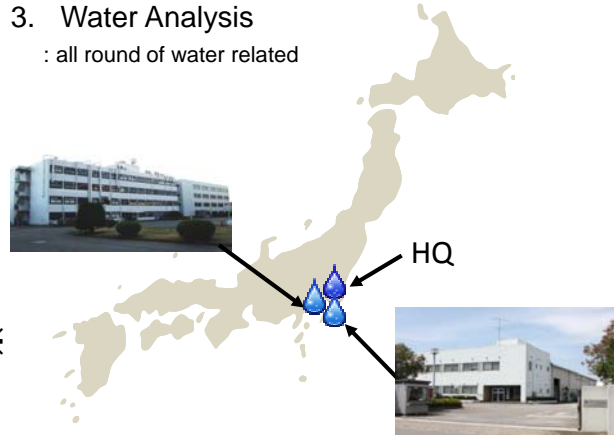


※ More than 500 R&D Staffs and Process/Construction Engineers

Fujisawa R&D Center

1. R&D
2. Support for Consultation & Design
3. Water Analysis

: all round of water related



Sodegaura Chemical Factory / R&D Center

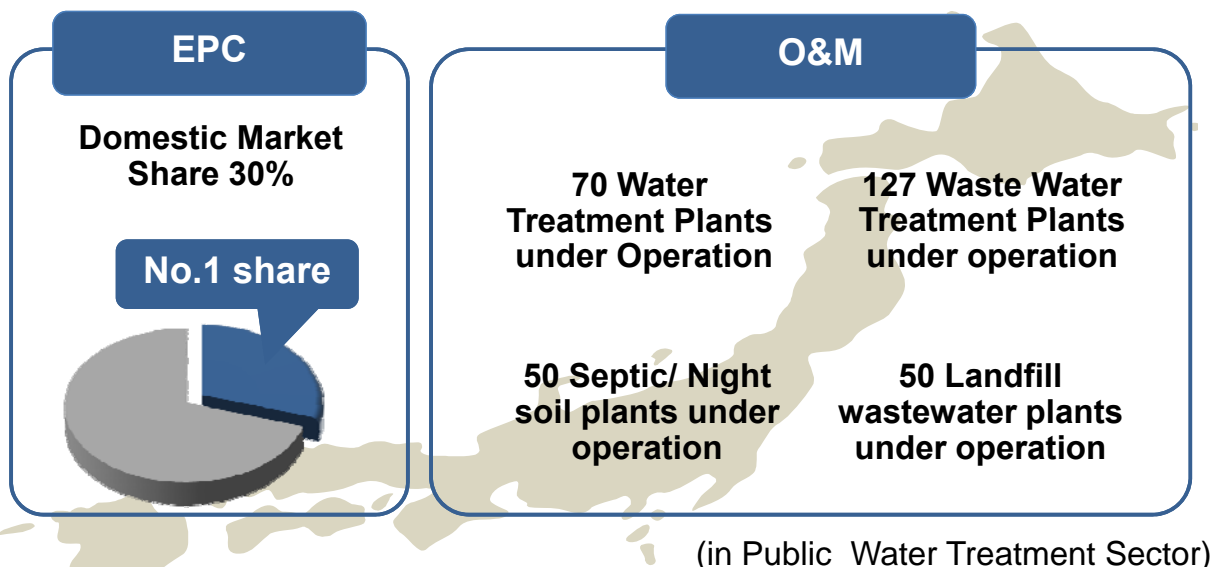
1. Manufacture
: Regenerate Activated Carbon, Various Chemical Series
2. R&D
3. Analysis
: all round of Chemicals for water treatment related

All Rights Reserved by Swing Corporation



Swing - Domestic EPC and O&M Experience

Swing is market leader for EPC and O&M in Japan and has plentiful experience abroad.



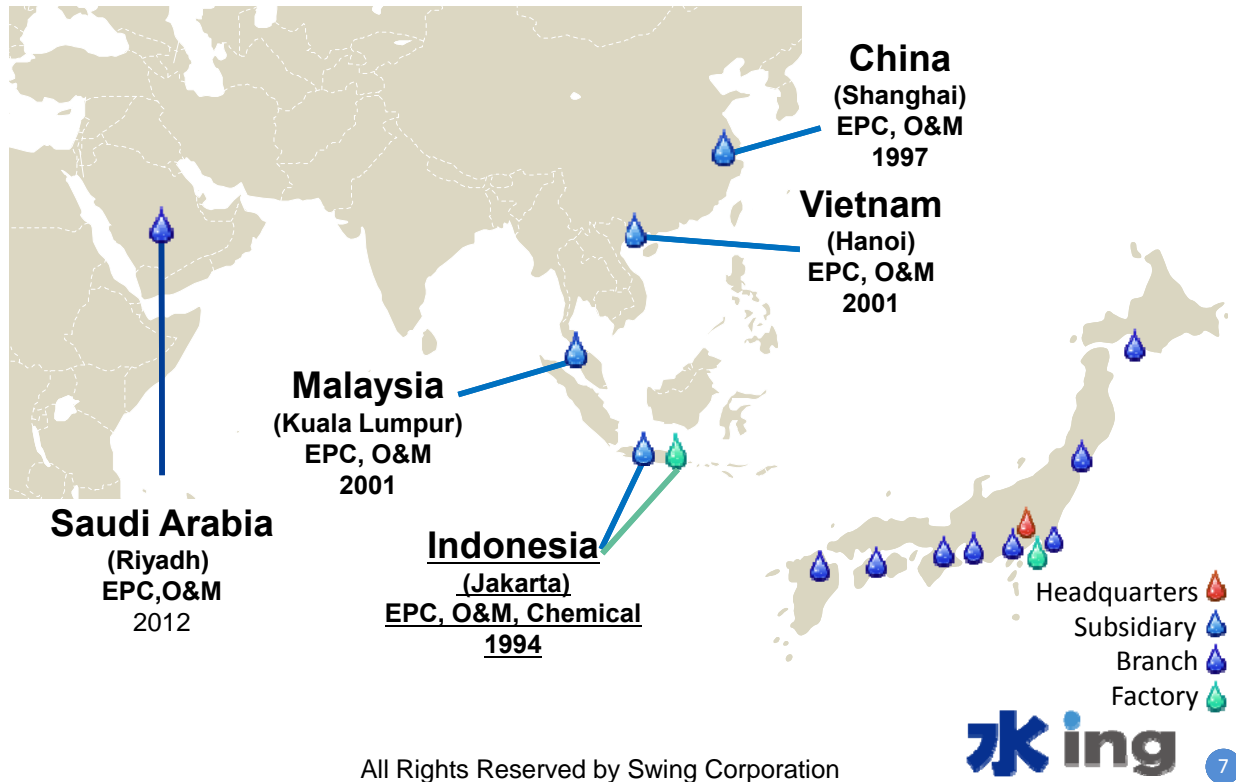
(in Public Water Treatment Sector)

All Rights Reserved by Swing Corporation



Swing Network

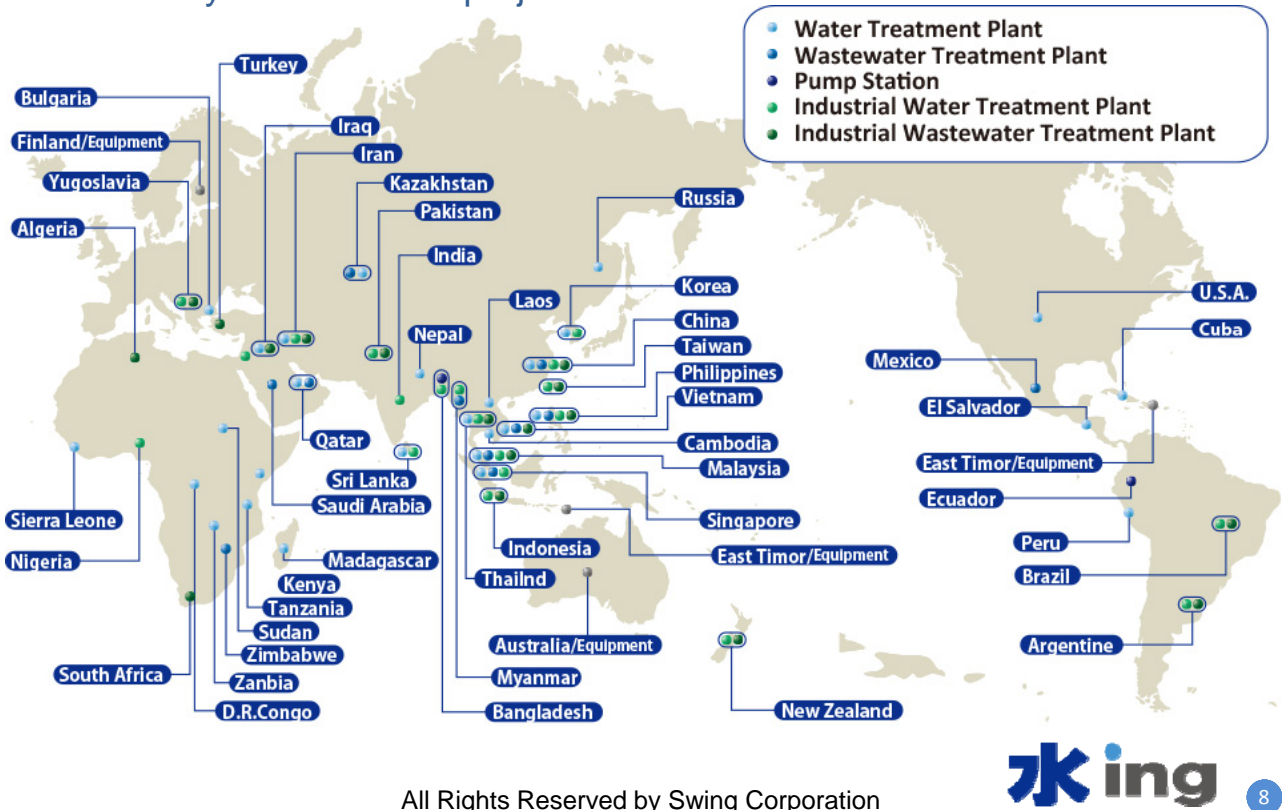
SWING has 9 branches in Japan, and is focusing on Asia and Middle East market.



All Rights Reserved by Swing Corporation

Swing Overseas Track Records

Successfully delivered 500 projects in over 50 countries since 1995



All Rights Reserved by Swing Corporation

Introduction of Swing activity in Indonesia

PT. Swing Indonesia (former Name : PT. Ebara Prima Indonesia)

【Est.】 December, 1994

【Address】

HQ & Activated Carbon Factory

: Kawasan Industri Modern Cikande,
 Jl. Modern Industri 1 No.12 Cikande,
 Serang, Banten 42186, Indonesia



Engineering Office

: Jl. Jalur Sutera Blok B29 No.41
 Alam Sutera, Tangerang 15413,
 Indonesia

【Description of Business】

- 1). **Water Business** : Consultation, EPC, O&M for all kinds of water related industry
- 2). **Manufacturing & Sales** : Activated Carbon, Chemical for Boiler & Cooling tower

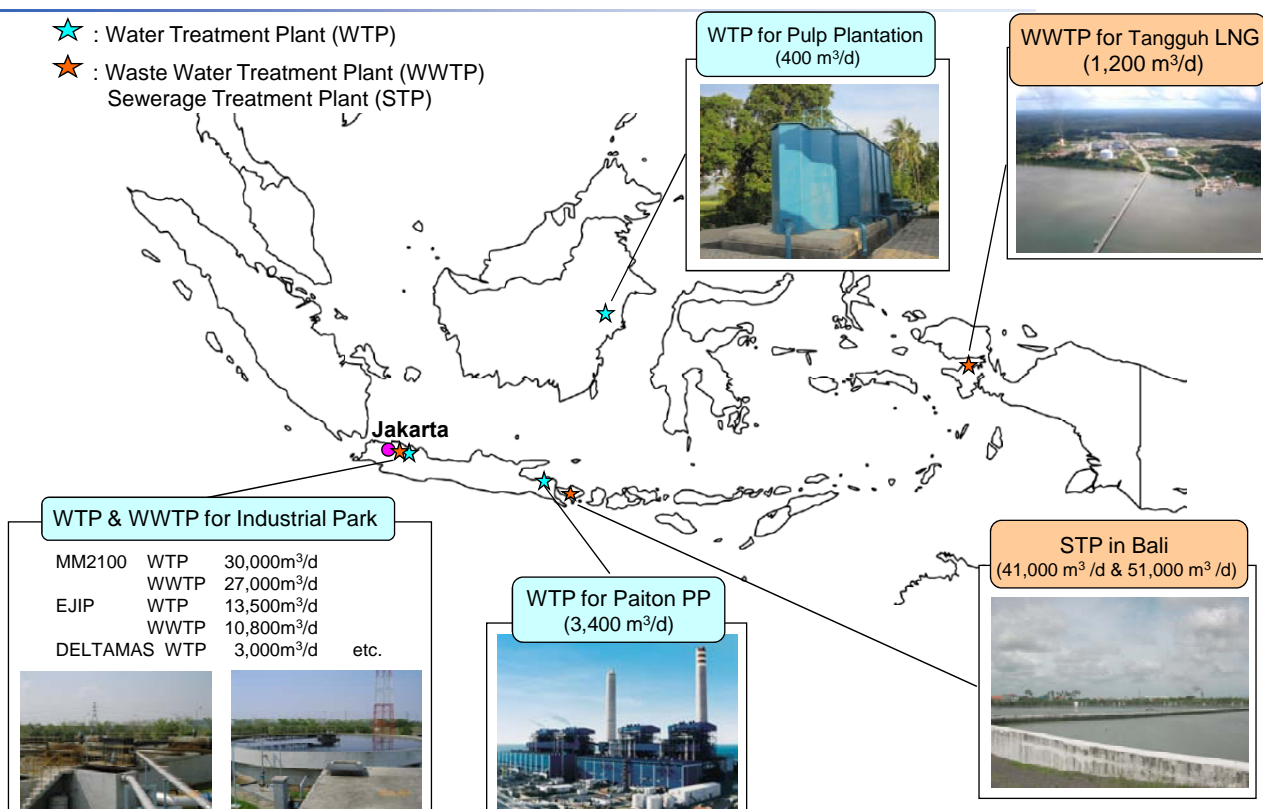
【Number of Employees】 80 (as at the end of 2013)

All Rights Reserved by Swing Corporation



Swing – Track Records in Indonesia

- ★ : Water Treatment Plant (WTP)
- ★ : Waste Water Treatment Plant (WWTP)
 Sewerage Treatment Plant (STP)



All Rights Reserved by Swing Corporation



Bali/ Denpasar Sewerage Development Project

- Phase (I)
Capacity : 41,000 m³/day
Completion: March 2005

- Phase (II)
Capacity : 51,000 m³/day
Completion: March 2011



< Treatment Process >



All Rights Reserved by Swing Corporation



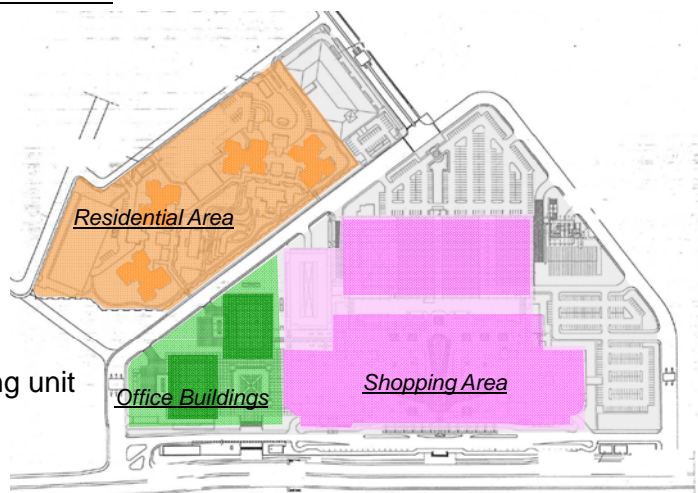
11

A. EPC of Total 5 Sewerage Treatment Plants for Senayan Square

- STP for Residential Area:
-150 m³/day x 1
- STP for Shopping Area:
-500 m³/day x 1 & 1040 m³/day x 1
- STP for Office Buildings:
-600 m³/day x 1

Treatment Method:

- (a) Activated sludge treatment with deodorizing unit
- (b) Membrane Bioreactor Systems



B. Operation & Maintenance of all Sewage Treatment Plants in Senayan Square

- Daily operation for 24h x 7days/week
- 12 Operators
- Total Capacity of 3,500 m³/day
- Regular maintenance

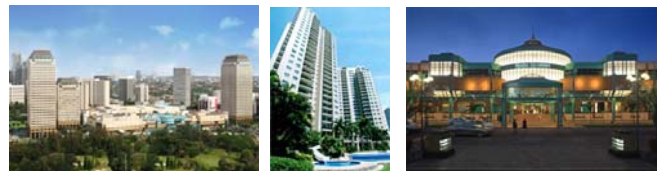


Photo: <http://www.plaza-senayan.com/>

All Rights Reserved by Swing Corporation



12

Swing - Water Environment Improvement & Task

1. Protection of Raw Water Sources
2. Water Environment Improvement in Greater Area

→ Sewerage Treatment Plant Increase

➔ Sludge Volume Increase

What is real task ?



• Provision for Environment

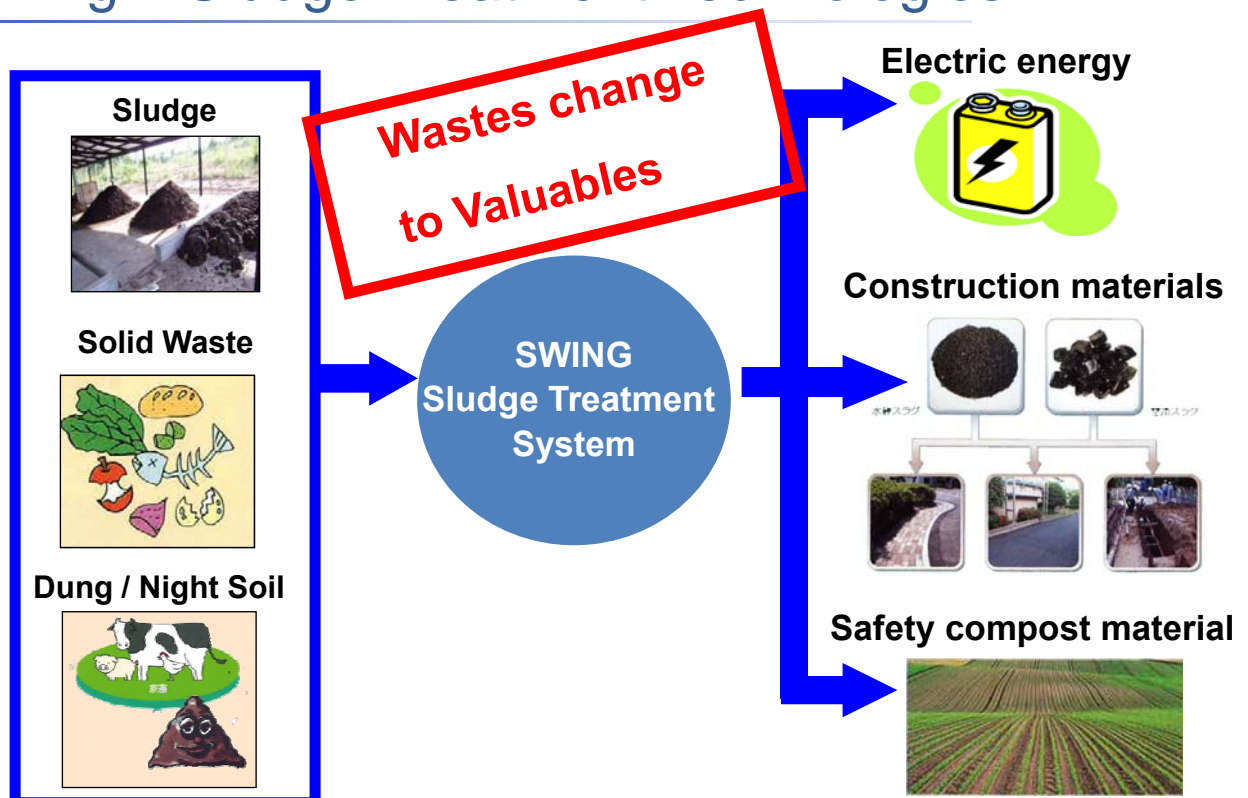
→ **Wastes change to Valuables**

All Rights Reserved by Swing Corporation



13

Swing – Sludge Treatment Technologies



All Rights Reserved by Swing Corporation



14

Methane Fermentation System

Multiple Recycling System of Sewerage Sludge and Industrial Organic Waste in KUROBE CITY

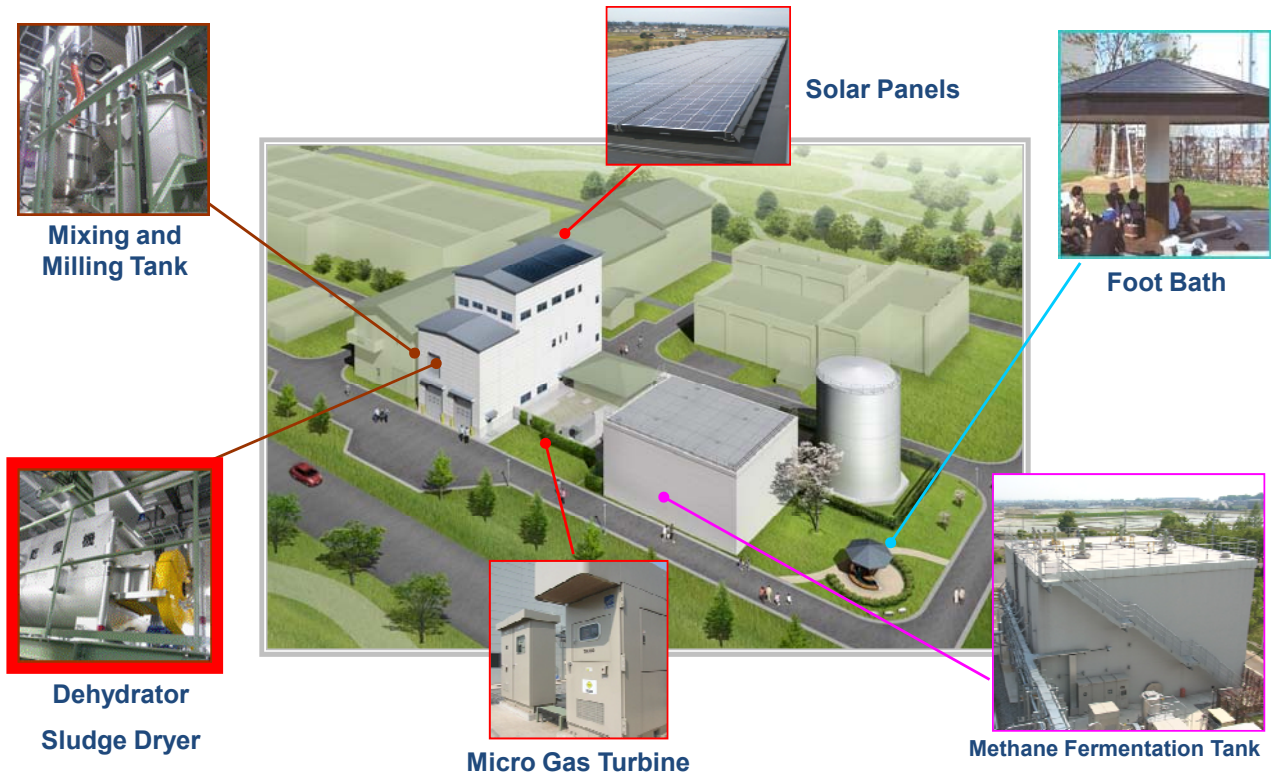


Delivered in 2011
[80m³/day]

All Rights Reserved by Swing Corporation



Overview of Methane Fermentation Plant



All Rights Reserved by Swing Corporation



Advantages for Each Stake Holders

+ Local Government

- Sludge Discharge Reduced by 60%
⇒ Effective Utilization (Alternative Coal, Fertilizer)
- Fuel for Sludge Drying Unnecessary
- Supplements Electricity Supply for WWTP by 10%

+ Regional Contribution

- Foot Bath Facility (Several Hundreds of Visitors per Month)

+ Private Factory

- Reduced Disposal Cost

+ Biomass Power Plant

- Available Alternative Fuel

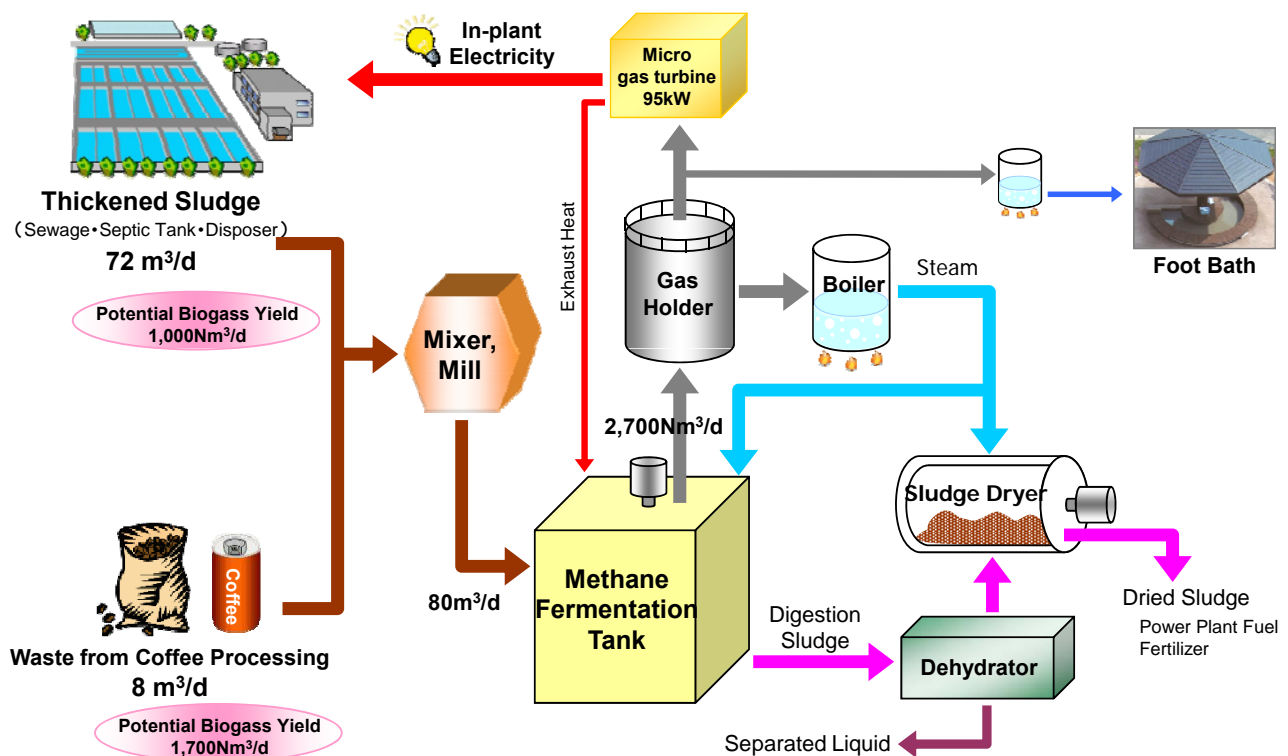


All Rights Reserved by Swing Corporation

king

17

System Configuration

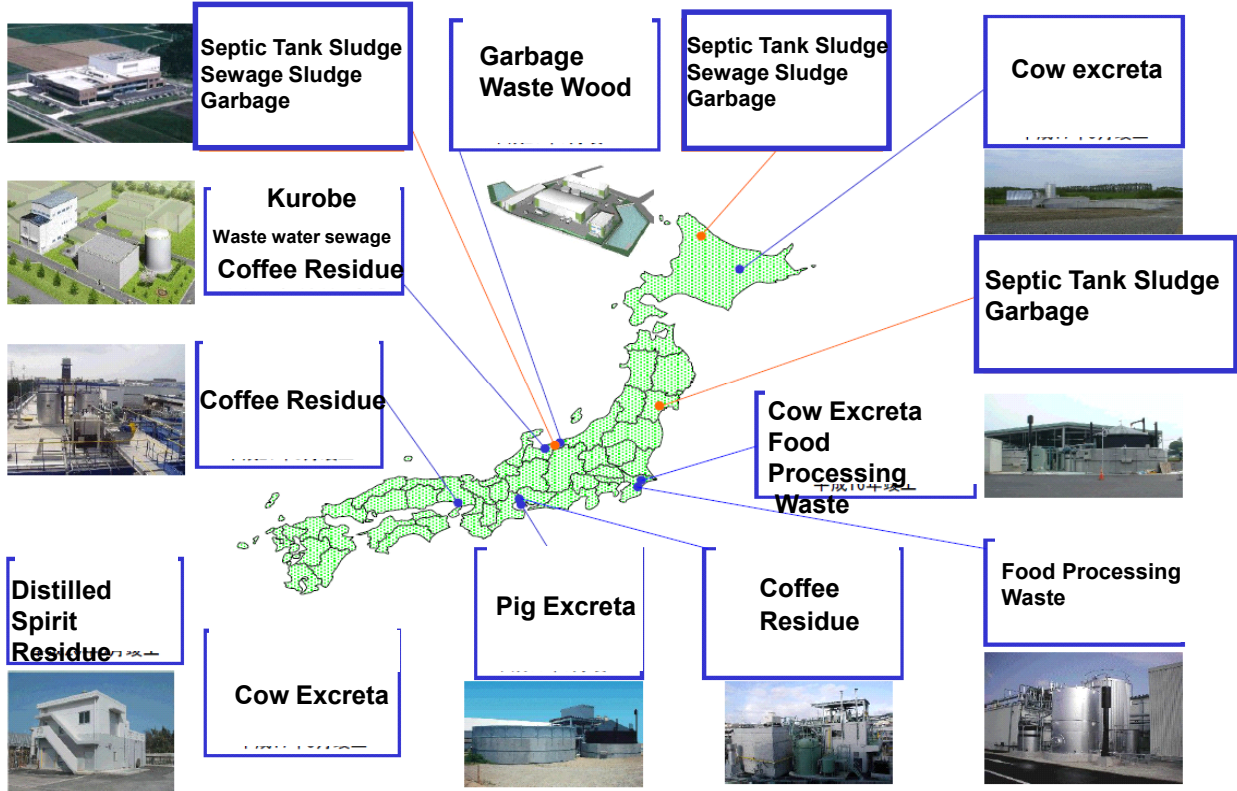


All Rights Reserved by Swing Corporation

king

18

Swing – Trustworthy Biomass Recycling Plant in Japan



All Rights Reserved by Swing Corporation



19

KOBE Harvest Project - Harvest rich resources from Sewerage

Industry – Government collaboration Project supported by Ministry of Land, Infrastructure, Transport and Tourism



Harvest rich resources from sewerage

Phosphorus recovery from sewerage



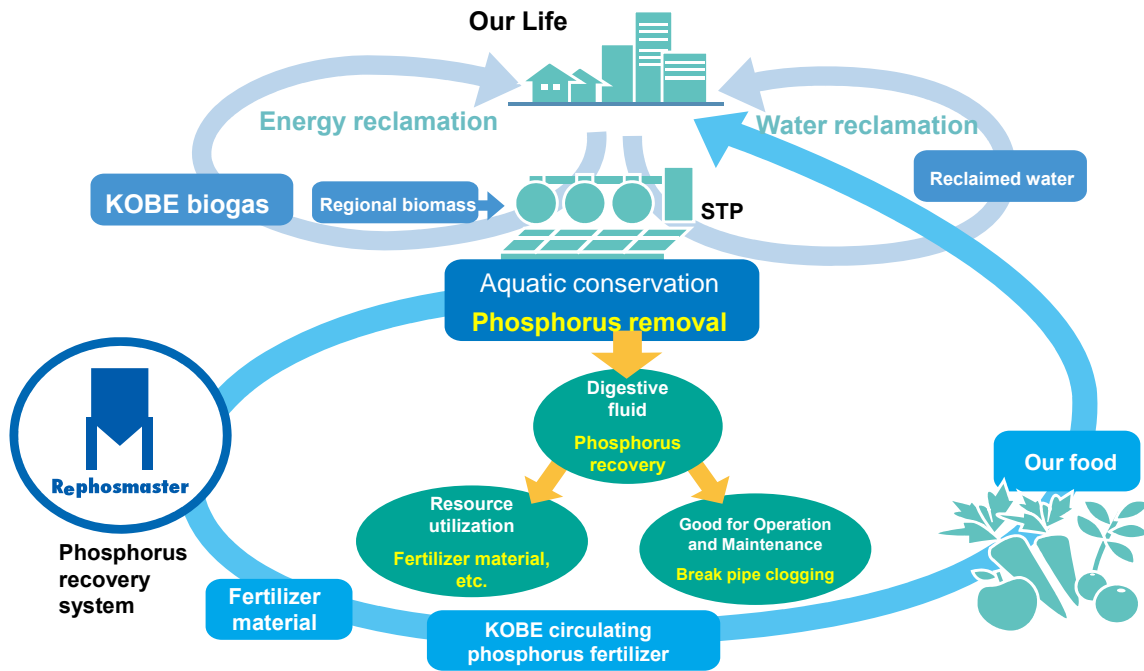
All Rights Reserved by Swing Corporation



20

KOBE Harvest Project – Protect environment by phosphorus recovery from sewerage

Industry – Government collaboration Project supported by Ministry of Land, Infrastructure, Transport and Tourism



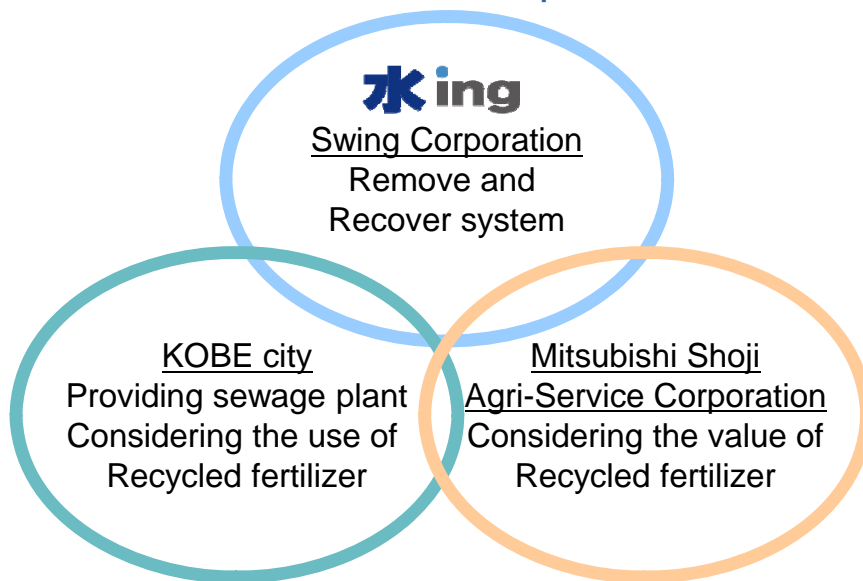
All Rights Reserved by Swing Corporation



21

KOBE Harvest Project -Structures / Industry – Government collaboration

Industry – Government collaboration Project supported by Ministry of Land, Infrastructure, Transport and Tourism



Establishing a resource recycling system and diffuse departure through industry-government collaboration.

All Rights Reserved by Swing Corporation



22

Track Record – Japan`s First PPP Entity

Track Record

The Hiroshima Prefectural Government

- Stabilize business foundation
- Reinforce technology
- Prepare for dilapidated facilities/emergency

35%

Swing Corporation

- Acquire the long-term asset management skill
- Improve Assent management capability

65%

Japan`s First water supply service led by private sector Mizu Mirai Hiroshima

PPP



- Operation, management, and maintenance of water supply facilities
- Consulting, human resource development, and training services for water business

- ☑ Solve income reduction problem
 - ⇒ Achieve economies of scale by expanding the business domain
 - ⇒ Develop a new revenue stream
- ☑ Solve the aging facilities `s problem
- ☑ Solve declining the number of engineers and the level of technologies
- ☑ Improve the efficiency by private sector`s originality and ingenuity



All Rights Reserved by Swing Corporation



23

Terima kasih banyak !

Thank you very much for your attention !



Swing, a total solution provider for water and the environment

All Rights Reserved by Swing Corporation



24