

平成26年8月の建設工事受注動態統計調査(大手50社調査)結果

民間工事は、金融業、保険業、サービス業、電気・ガス・熱供給・水道業等が減少したため、対前年同月比16.1%減少し、3ヶ月ぶりに減少した。
総計は、同8.6%増加し、5ヶ月連続増加した。

1. 受注総額

- ① 8月の受注総額は1兆877億円。
- ② 対前年同月比は、8.6%増であり、5ヶ月連続の増加。
- ③ 国内は、民間工事は減少し、公共工事は増加した。国内計は9,129億円（対前年同月比6.3%減、5ヶ月ぶりの減少）。

2. 民間

- ① 8月の民間工事は5,546億円（対前年同月比16.1%減、3ヶ月ぶりの減少）
- ② 製造業は増加し、非製造業は減少した。
 - ・ 製造業（同14.3%増）、非製造業（同21.8%減）
 - ・ 発注者別では、不動産業、製造業等が増加し、金融業、保険業、サービス業、電気・ガス・熱供給・水道業等が減少した。
 - ・ 工事種類別では、建築、土木ともに減少した。倉庫・流通施設、宿泊施設、土地造成等が増加し、事務所・庁舎、教育・研究・文化施設、土木その他等が減少した。

3. 公共

- ① 8月の公共工事は3,247億円（対前年同月比16.7%増、17ヶ月連続の増加）
- ② 国の機関、地方の機関ともに増加した。
 - ・ 国の機関（同22.4%増、13ヶ月連続の増加）、地方の機関（同7.9%増、7ヶ月連続の増加）
 - ・ 発注者別では、国の機関は、独立行政法人、政府関連企業等が増加し、国が減少した。地方の機関は、都道府県、地方公営企業、その他が増加し、市区町村が減少した。
 - ・ 工事種類別では、建築、土木ともに増加した。事務所・庁舎、治山・治水、医療・福祉施設等が増加し、土木その他、道路、倉庫・流通施設等が減少した。

4. 海外

- ① 8月の海外工事は1,749億円（対前年同月比538.6%増、3ヶ月ぶりの増加）

※1 平成20年4月より日本標準産業分類が改訂されたため、民間の発注者分類の名称を変更しました。
・ 鉱業、建設業 → 鉱業、採石業、砂利採取業、建設業 ・ 運輸業 → 運輸業、郵便業
・ 卸売・小売業 → 卸売業、小売業 ・ 金融・保険業 → 金融業、保険業

※2 海外工事の受注額には、現地法人分は含まない。

※3 施工都道府県別受注高を、平成22年12月分からP.3に追加しました。
(施工ブロック別受注高、施工都道府県別受注高は、国内計からその他(駐留軍・外国公館と小口工事)を除いたものです。)

建設工事受注動態統計調査（大手50社調査） 時系列表

（上段：実額 百万円 下段：前年同期比 %）

		建設工事受注動態統計調査（大手50社調査）											建築	土木	施工高	未消化 工事高	持ち 工事 月数		
		総計		国内計			民間等			公共機関								その他	海外
		小計	製造業	非製造業	小計	国の機関	地方の機関												
年度	平成 23 年度	10,782,855	10,195,884	7,236,702	1,568,267	5,668,436	2,488,377	1,403,924	1,084,452	470,805	586,971	7,361,676	3,421,179	10,786,925	11,780,272				
		7.1	6.7	3.7	29.2	▲ 1.7	22.7	12.6	38.8	▲ 13.9	14.3	3.4	16.0	3.7	3.3				
	平成 24 年度	11,044,725	10,528,394	7,425,835	1,489,492	5,936,344	2,621,282	1,612,894	1,008,388	481,277	516,331	7,579,098	3,465,627	11,121,742	11,775,429				
		2.4	3.3	2.6	▲ 5.0	4.7	5.3	14.9	▲ 7.0	2.2	▲ 12.0	3.0	1.3	3.1	▲ 0.0				
	平成 25 年度	13,267,704	12,400,801	8,482,779	1,456,789	7,025,989	3,439,061	2,135,538	1,303,523	478,962	866,903	8,847,002	4,420,703	12,432,664	12,936,356				
		20.1	17.8	14.2	▲ 2.2	18.4	31.2	32.4	29.3	▲ 0.5	67.9	16.7	27.6	11.8	9.9				
四 半 期	25 年 4- 6 月	2,490,780	2,363,148	1,715,819	310,642	1,405,177	530,904	353,171	177,733	116,425	127,632	1,686,978	803,802	2,572,898	11,826,081				
		17.0	14.2	13.5	▲ 10.6	20.8	18.7	57.6	▲ 20.4	4.9	117.0	14.4	23.0	7.7	2.5				
	7- 9	4,107,533	3,923,875	2,914,498	423,556	2,490,942	891,591	503,214	388,376	117,787	183,658	3,061,579	1,045,954	3,073,725	13,134,106				
		48.7	49.0	60.6	17.2	71.4	29.9	17.5	50.4	▲ 11.2	43.7	61.5	20.8	11.2	13.7				
	10-12	2,960,008	2,767,709	1,895,830	328,022	1,567,808	759,372	435,651	323,721	112,507	192,299	1,904,980	1,055,028	3,290,613	12,907,596				
		18.1	16.0	10.7	▲ 12.4	17.1	37.1	30.2	47.7	▲ 4.9	59.4	5.8	49.6	17.0	14.1				
	26 年 1- 3 月	3,709,383	3,346,069	1,956,632	394,569	1,562,063	1,257,194	843,502	413,692	132,244	363,314	2,193,465	1,515,918	3,495,428	12,936,356				
		1.6	▲ 2.7	▲ 18.0	▲ 2.8	▲ 21.2	34.7	34.8	34.4	10.8	73.8	▲ 8.9	22.1	10.7	9.9				
	4- 6	3,385,177	3,277,489	1,879,531	394,532	1,484,998	1,289,835	960,064	329,771	108,123	107,688	1,936,380	1,448,797	2,748,165	13,523,940				
		35.9	38.7	9.5	27.0	5.7	143.0	171.8	85.5	▲ 7.1	▲ 15.6	14.8	80.2	6.8	14.4				
次 月	25 年 8 月	1,001,415	974,034	661,041	104,432	556,608	278,277	168,407	109,870	34,716	27,381	679,050	322,365	1,046,359	12,023,925	12.5			
		21.4	21.5	23.0	1.3	28.2	23.9	19.9	30.5	▲ 13.3	20.2	25.2	14.2	12.6	4.3				
	9	2,254,766	2,198,925	1,729,642	226,510	1,503,132	425,242	229,344	195,897	44,041	55,840	1,781,728	473,037	1,264,020	13,134,106	13.6			
		89.8	101.3	127.1	47.0	147.4	51.3	30.6	85.8	▲ 11.2	▲ 41.7	112.8	34.9	7.6	13.7				
	10	1,011,948	968,813	724,097	96,266	627,830	207,469	129,568	77,902	37,246	43,135	715,724	296,224	898,525	13,229,672	13.5			
		61.1	60.7	67.0	▲ 13.5	94.7	56.1	36.7	104.3	2.4	70.7	64.9	52.6	21.7	15.5				
	11	812,985	718,328	478,808	98,821	379,987	202,579	128,739	73,840	36,941	94,658	478,392	334,593	1,140,289	13,032,705	13.0			
		2.2	▲ 5.0	▲ 14.7	▲ 13.6	▲ 15.0	30.3	69.8	▲ 7.3	▲ 5.7	141.4	▲ 17.2	54.1	27.4	14.7				
	12	1,135,075	1,080,569	692,925	132,935	559,991	349,324	177,344	171,980	38,319	54,506	710,864	424,211	1,251,800	12,907,596	12.8			
		4.9	5.3	▲ 3.5	▲ 10.7	▲ 1.6	31.6	8.1	69.7	▲ 10.4	▲ 3.0	▲ 9.9	44.4	6.2	14.1				
	26 年 1 月	826,443	753,920	524,048	103,312	420,736	194,622	143,643	50,979	35,250	72,524	582,688	243,755	791,392	12,930,040	12.8			
		15.2	8.2	6.2	13.1	4.7	13.7	37.3	▲ 23.3	9.2	248.9	17.2	10.7	5.6	14.4				
	2	1,119,654	938,631	521,968	123,268	398,700	377,707	238,732	138,975	38,957	181,022	726,359	393,295	952,300	12,939,037	12.9			
		12.3	▲ 1.3	▲ 18.4	19.9	▲ 25.7	38.6	30.6	54.8	▲ 1.3	293.7	9.5	17.6	▲ 12.2	15.3				
	3	1,763,286	1,653,518	910,616	167,989	742,626	684,865	461,126	223,739	58,037	109,768	884,418	878,868	1,751,736	12,936,356	12.5			
	▲ 8.8	▲ 7.7	▲ 27.4	▲ 20.7	▲ 28.8	39.8	36.3	47.6	21.9	▲ 22.8	▲ 29.1	27.9	32.5	9.9					
4	1,346,461	1,337,361	658,144	140,252	517,892	641,664	578,046	63,618	37,553	9,100	620,844	725,617	797,867	13,435,138	12.9				
	104.9	106.6	35.2	62.0	29.3	418.4	486.2	152.7	2.6	▲ 5.8	38.3	248.7	13.6	13.4					
5	884,944	814,454	510,004	115,794	394,210	269,960	160,805	109,155	34,490	70,490	554,013	330,931	833,196	13,505,744	12.9				
	13.7	8.4	▲ 6.0	4.4	▲ 8.6	55.3	44.1	75.4	▲ 1.6	162.2	▲ 2.5	57.5	3.0	14.2					
6	1,153,772	1,125,674	711,383	138,487	572,896	378,211	221,213	156,999	36,080	28,098	761,523	392,249	1,117,102	13,523,940	12.9				
	9.3	16.7	3.6	22.3	▲ 0.1	62.1	54.7	73.8	▲ 19.4	▲ 69.2	13.6	1.7	5.2	14.4					
7	1,058,780	967,204	643,472	118,743	524,729	286,410	165,504	120,907	37,321	91,576	660,473	398,306	788,185	13,803,476	13.1				
	24.4	28.8	22.8	28.2	21.7	52.3	56.9	46.4	▲ 4.4	▲ 8.8	9.9	59.0	3.3	14.4					
8	1,087,724	912,870	554,552	119,352	435,200	324,687	206,154	118,533	33,631	174,854	744,598	343,127	—	—	—				
	8.6	▲ 6.3	▲ 16.1	14.3	▲ 21.8	16.7	22.4	7.9	▲ 3.1	538.6	9.7	6.4	—	—	—				
累計	H26.4 ~ 26.8	5,531,681 27.4	5,157,553 26.2	3,077,555 6.1	632,627 24.6	2,444,928 2.2	1,900,932 90.6	1,331,721 112.4	569,211 53.8	179,076 ▲ 5.8	374,118 46.5	3,341,451 12.6	2,190,230 59.1	—	—	—			

建設工事受注動態統計調査（大手50社調査） 結果表

1. 受注高 (平成 26年8月分)

(単位: 百万円, %)

工事種類別 発注者別	建											土					木				合計	前年同月比	
	事務所 庁舎	宿泊 施設	店舗	工場 発電所	倉庫 流通 施設	住宅	教育 研究 文化施設	医療 福祉施設	娯楽 施設	その他	計	治山 治水	鉄道	上水道 下水道	土地造成	港湾 空港	道路	電線路	その他	計			
民間等業	製造業	9,949	6,422	999	65,000	3,406	244	6,601	282	40	2,507	95,449	660	8	5	1,084	4,305	10	▲572	18,404	23,904	119,352	14.3
民間等業	農林漁業	44	0	264	1	0	0	0	13	0	84	406	0	0	0	0	0	1	0	3	4	410	▲82.8
	鉱業、採石業、砂利採取業、建設業	576	2	117	1,115	283	539	179	1	0	734	3,547	0	16	43	7	1	17	323	558	966	4,512	2.0
	電気・ガス・熱供給・水道業	2,320	0	253	2,868	20	2	34	20	0	540	6,057	834	0	0	318	▲1	25	1,057	7,373	9,606	15,663	▲77.7
	運輸業、郵便業	6,665	583	1,345	66	31,404	229	15	35	2	5,470	45,813	5	17,410	0	208	740	542	63	471	19,439	65,252	▲12.4
	情報通信業	7,829	1	62	68	0	1	27	35	13	5,926	13,962	0	0	0	0	0	7,574	1,108	8,682	22,644	▲13.4	
	卸売業、小売業	3,557	15	8,104	5,229	328	3,992	▲7	51	13	1,688	22,969	0	0	0	12	7	20	0	1,481	1,520	24,489	1.5
	金融業、保険業	18,122	81	420	9	2,317	476	3	12	2	1,625	23,068	0	0	0	0	0	3	0	2	5	23,073	▲78.6
	不動産業	14,871	5,374	26,489	569	25,895	60,220	4,571	1,660	148	4,228	144,025	0	0	0	2,825	0	25	0	2,250	5,100	149,125	207.4
	サービス業	42,685	3,757	1,871	972	3,141	1,203	16,378	26,420	8,178	4,260	108,865	1	▲71	59	6,429	726	966	24	5,546	13,680	122,545	▲35.4
その他	423	30	1,526	765	6	693	301	922	3	946	5,613	0	354	0	47	3	3	38	1,428	1,873	7,486	▲15.6	
小計	97,092	9,843	40,452	11,662	63,392	67,355	21,501	29,169	8,358	25,500	374,325	839	17,709	102	9,846	1,476	1,602	9,080	20,220	60,875	435,200	▲21.8	
計	107,041	16,265	41,450	76,661	66,799	67,599	28,102	29,451	8,398	28,007	469,773	1,499	17,718	107	10,930	5,781	1,612	8,508	38,624	84,779	554,552	▲16.1	
公共機関	国	2,604	0	0	57	▲5	46	912	591	0	2,093	6,298	42,660	0	0	895	6,681	15,859	435	19,133	85,662	91,960	▲24.4
	独立行政法人	62,945	0	0	0	0	1,030	2,869	1,015	0	2,920	70,779	0	3,693	987	6,978	5	1,035	2	660	13,360	84,139	363.5
	政府関連企業等	1,838	14	0	0	0	1	5,515	1,439	59	716	9,582	317	1,438	3,557	282	1,241	13,528	114	▲4	20,473	30,055	5.2
	小計	67,387	14	0	57	▲5	1,078	9,296	3,045	59	5,729	86,658	42,977	5,131	4,544	8,155	7,926	30,422	551	19,798	119,496	206,154	22.4
	都道府県	2,648	0	0	0	2,344	0	20	32,186	2	282	37,483	4,382	0	2,478	3,993	2,324	1,869	142	906	16,093	53,576	75.9
	市区町村	5,649	0	334	166	0	91	9,200	177	152	3,397	19,166	664	38	2,146	1,241	1,599	2,019	1,020	6,715	15,443	34,610	▲46.1
	地方公営企業	6	0	0	0	0	0	0	10,197	0	561	10,764	0	192	15,219	6	0	0	6	0	15,423	26,188	87.5
	その他	0	0	0	17	0	0	3	1,322	0	7	1,350	0	0	1,691	803	0	44	0	272	2,810	4,159	228.2
	小計	8,303	0	334	184	2,344	91	9,223	43,883	154	4,247	68,763	5,046	230	21,535	6,043	3,924	3,932	1,168	7,893	49,770	118,533	7.9
計	75,690	14	334	241	2,339	1,168	18,519	46,927	213	9,976	155,421	48,022	5,361	26,079	14,198	11,850	34,354	1,718	27,682	169,265	324,687	16.7	
駐留軍・外国公館	33	0	0	0	0	59	69	15	0	489	664	0	0	0	0	0	0	0	537	537	1,201	1.9	
小口工事										6,561										25,869	32,430	▲3.3	
国内	前年同月比	▲5.7	95.8	▲24.7	▲6.0	22.0	▲16.1	▲35.1	47.6	29.1	▲11.2	▲4.1	319.8	60.5	52.9	49.5	▲30.9	▲40.1	5.6	▲49.9	▲10.9	▲6.3	-
	海外	2,655	▲1,081	52	11,517	84	2,423	87	95,944	0	496	112,178	37	9,861	855	27,577	18,195	513	194	5,443	62,676	174,854	538.6
総計	前年同月比	▲4.7	15.98	▲25.5	▲6.5	22.0	▲18.4	▲35.0	232.9	29.1	▲10.2	9.7	319.2	128.0	57.4	215.2	37.2	▲45.7	7.1	▲45.8	6.4	8.6	-

2. 施工高及び未消化工事高[※] (平成 26年 7月分)

	合計	建築	土木	前年同月比
施工高(月間)	788,185	538,328	249,857	3.3
未消化工事高 [※] (月末)	13,803,476	8,986,518	4,816,957	14.4
手持工事月数	13.1	12.9	13.6	-

※「未消化工事高」とは受注済みの工事高から、当月までの出来高を引いた工事高のことである。

3. 大規模工事(受注高10億円以上の国内工事) (平成 26年 8月分)

大規模工事 比率 56.3%

	計		建築		土木	
	件数	受注高	件数	受注高	件数	受注高
合計	151	513,928	100	375,395	51	138,533
民間等	89	263,442	78	241,045	11	22,398
公共機関	62	250,486	22	134,351	40	116,135

前年同月比 ▲10.4%

4. ブロック別受注高 (平成 26年 7月分)

	北海道	東北	関東	北陸	中部	近畿	中国	四国	九州・沖縄
受注高	29,224	141,955	379,127	27,541	78,003	151,649	34,461	30,030	57,891
前年同月比	22.7	117.9	28.6	67.4	19.5	19.8	▲29.2	104.2	2.6

5. 施工都道府県別受注高 (平成26年7月分)

都道府県名	受注額	都道府県名	受注額	都道府県名	受注額	都道府県名	受注額	都道府県名	受注額
北海道	29,224	栃木	15,026	石川	7,490	滋賀	1,565	岡山	6,607
青森	5,425	群馬	4,658	福井	4,107	京都	14,311	広島	15,538
岩手	21,883	埼玉	15,473	山梨	3,456	大阪	80,869	山口	5,523
宮城	56,851	千葉	35,195	長野	8,150	兵庫	48,279	徳島	7,549
秋田	1,976	東京	185,614	岐阜	2,646	奈良	1,782	香川	13,359
山形	1,639	神奈川	101,095	静岡	17,603	和歌山	4,843	愛媛	1,848
福島	54,181	新潟	6,951	愛知	52,870	鳥取	953	高知	7,274
茨城	10,461	富山	8,993	三重	4,884	島根	5,840	福岡	29,551
								計	929,882

注. 「2. 施工高及び未消化工事高[※]」, 「4. ブロック別受注高」及び「5. 都道府県別受注高」の数値については、前月分の値である。

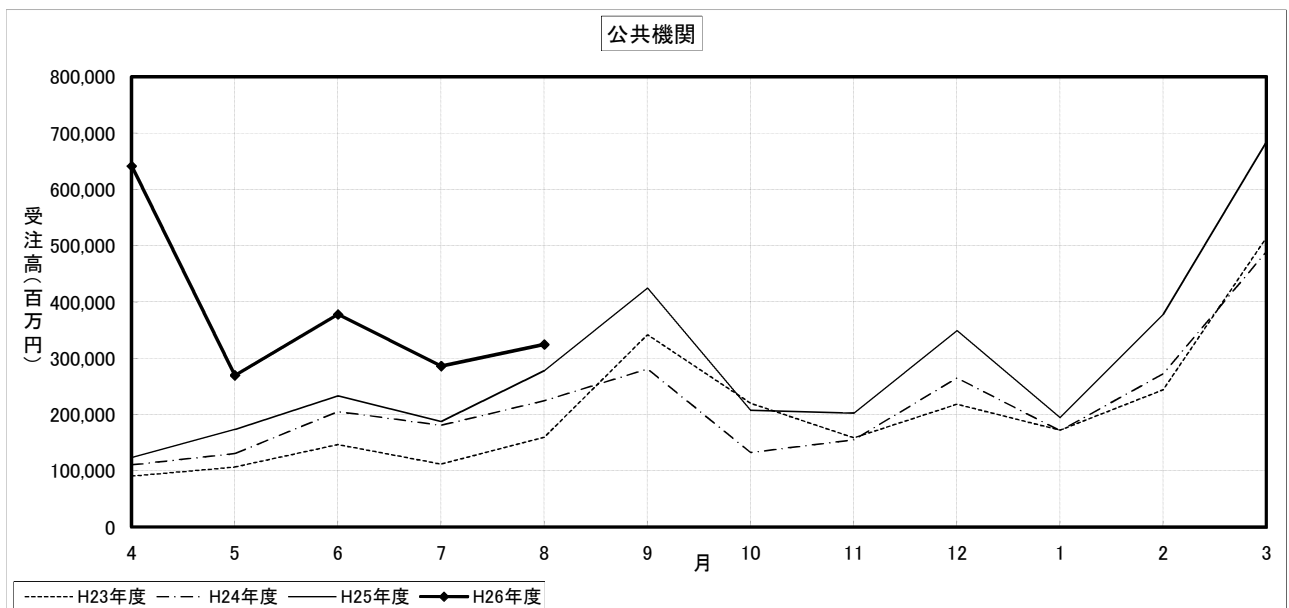
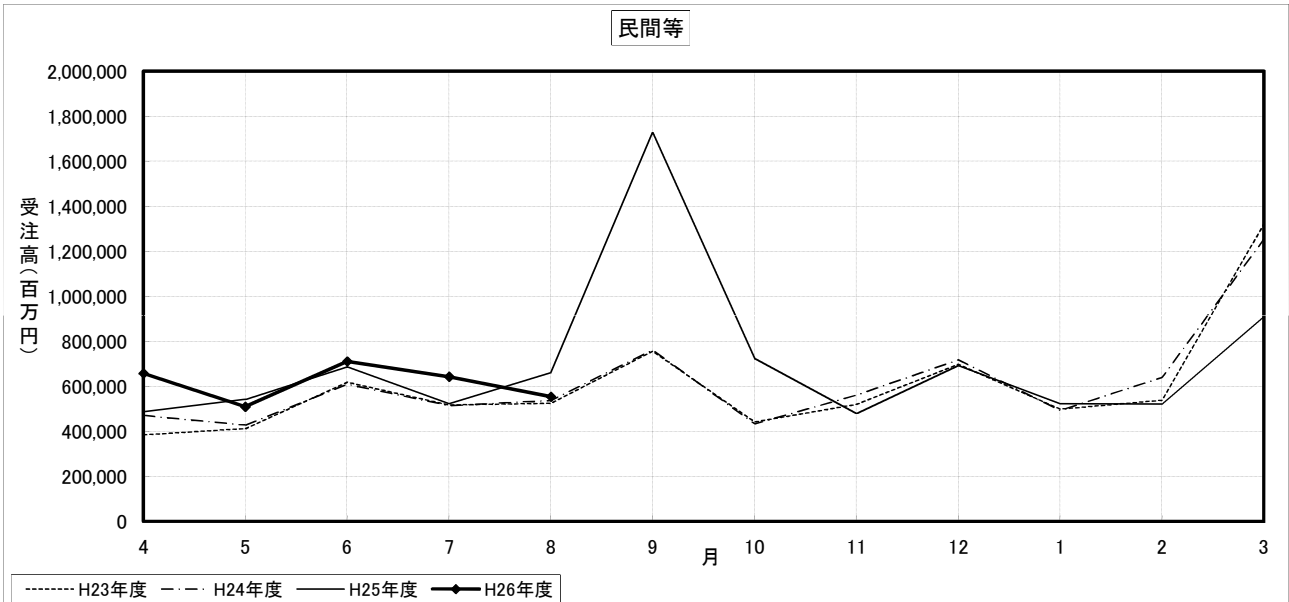
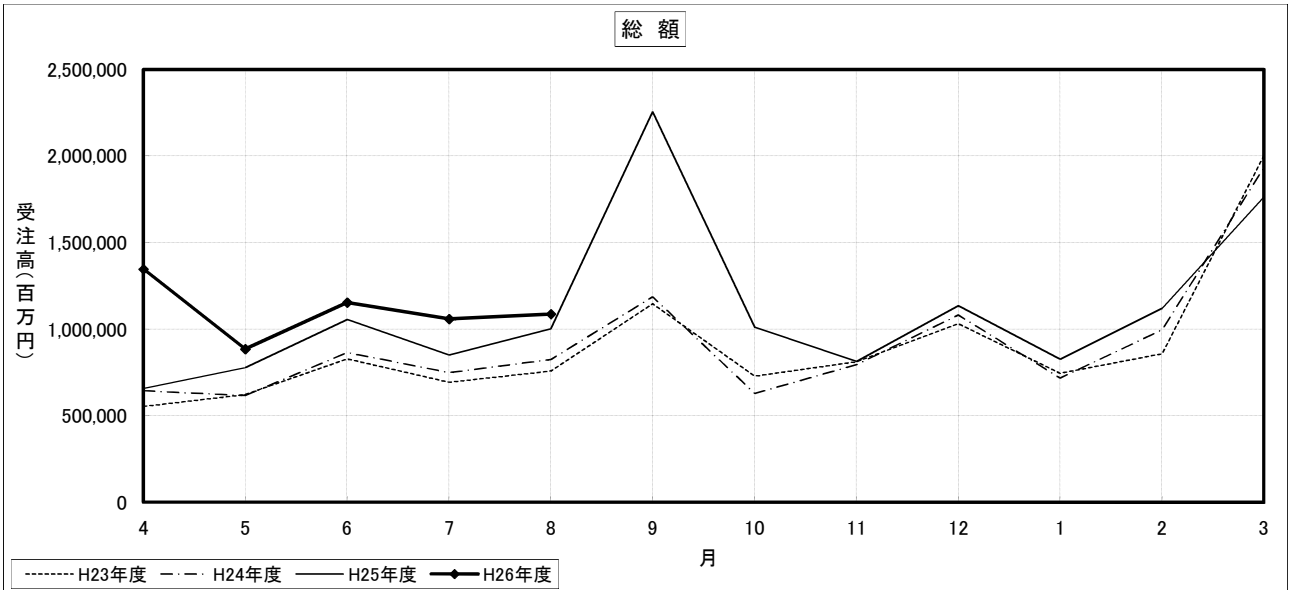
建設工事受注動態統計調査（大手50社調査） 寄与度表

寄与度（平成26年8月分）

工事種類別		建										土				木				合計		
		事務所 庁舎	宿泊 施設	店舗	工場 発電所	倉庫 流通 施設	住宅	教育 研究 文化施設	医療 福祉施設	娯楽 施設	その他	計	治山 治水	鉄道	上水道 下水道	土地造成	港湾 空港	道路	電線路		その他	計
民間 製造 業	製造業		0.63	-0.15	1.21	-0.34	-0.14	-0.47			0.56					0.40			0.49	0.93	1.49	
	農林漁業					-0.21					-0.20										-0.20	
	鉱業、採石業、砂利採取業、建設業	-0.13									-0.32	-0.32							0.36	0.33		
	電気・ガス・熱供給・水道業				-2.19						-2.13									-3.26	-3.32	-5.45
	運輸業、郵便業	-2.79		0.10	-0.11	1.49					-1.36		0.45								0.44	-0.92
	情報通信業	0.11									-0.43	-0.34										-0.35
	卸売業、小売業	-0.23		-0.54	0.50	-0.17	0.39				0.13					-0.13				0.10		
	金融業、保険業	-8.57		-0.11		0.21						-8.45										-8.45
	不動産業	7.75	0.43	-0.75		2.56	-0.69	0.50		-0.16	0.19	9.92									0.13	10.05
	サービス業	-3.40	-0.23	-0.13		-0.77	-0.49	-1.93	-1.10	0.46	-0.20	-7.82				0.57				0.43	1.12	-6.70
その他			0.13			-0.24					-0.16										-0.14	
小計	-7.21	0.19	-1.24	-1.70	3.11	-0.98	-1.52	-0.99	0.23	-0.68	-10.80		0.45		0.51				-2.38	-1.32	-12.12	
計	-7.26	0.82	-1.39	-0.49	2.77	-1.12	-1.99	-1.02	0.20	-0.76	-10.24		0.45		0.58	0.46			-1.90	-0.39	-10.63	
公共 機関	国									-0.21		3.51				-1.26	-1.30		-3.98	-2.93	-2.97	
	独立行政法人	6.29								0.28	6.54		0.27		-0.38						6.59	
	政府関連企業等							0.16			0.11		0.14	0.35		0.11	-0.54				0.15	
	小計	6.34						0.18			6.61	3.53	0.41	0.44	-0.27	-1.15	-1.78		-4.05	-2.84	3.77	
	都道府県	-0.39				0.23	-0.22	-0.20	3.18		2.62				0.32	-0.20	-0.57				-0.31	2.31
	市区町村	0.22				-1.74		-0.48	-0.91		0.21	-2.68			-0.13	0.12	0.12			-0.45	-0.27	-2.95
	地方公営企業								1.01		1.04			0.49						-0.30	0.18	1.22
	その他								0.13		0.10			0.16							0.18	0.29
小計	-0.16				-1.51	-0.22	-0.71	3.40		0.28	1.09	0.16		0.53	0.53		-0.67		-0.74	-0.22	0.87	
計	6.18				-1.51	-0.18	-0.53	3.48		0.26	7.70	3.70	0.42	0.98	0.26	-1.25	-2.45		-4.79	-3.06	4.63	
駐留軍・外国公館																						
小口工事										-0.11											-0.11	
国内	-1.10	0.80	-1.37	-0.49	1.24	-1.32	-2.52	2.46	0.19	-0.48	-2.70	3.77	0.87	0.90	0.83	-0.79	-2.41		-6.64	-3.41	-6.11	
海外	0.19	-0.11		-0.13		-0.28		9.58			9.24		0.98		2.76	1.76	-0.65		0.54	5.48	14.73	
総計	-0.91	0.69	-1.43	-0.61	1.25	-1.60	-2.52	12.04	0.19	-0.44	6.55	3.77	1.85	0.98	3.59	0.97	-3.06		-6.09	2.07	8.62	

注) 1. 寄与度が0.1に満たない項目は、便宜上空欄としている。

建設工事受注動態統計調査（大手50社調査）の推移



建設工事受注動態統計調査(大手50社調査)季節変動調整済 時系列表

[X-12-ARIMAによる季節調整値]※季節調整に伴い、算出した過去の値を昭和60年分から掲載いたしました。(平成26年1月31日)

(単位:百万円)

		総計	民間等										公共機関					海外					
			計	製造業	非製造業				電気・ガス業	卸売・小売業、飲食店	金融・保険業	不動産業	サービス業	その他	計	国の機関			地方の機関				
					小計	農林漁業	運輸・通信業	小計								国	公団・事業団		政府関連企業	小計	都道府県	市区町村	地方公営企業
昭和60年	4月	887,306	533,498	-	-	-	-	-	-	-	-	-	261,254	131,858	26,402	-	-	139,042	61,462	56,876	10,375	12,952	76,752
	5	1,017,249	669,003	-	-	-	-	-	-	-	-	-	258,803	134,564	67,610	-	-	133,176	51,977	57,697	13,356	11,477	67,789
	6	946,211	542,753	-	-	-	-	-	-	-	-	-	270,757	126,812	44,372	-	-	147,636	42,347	68,459	19,743	15,157	81,227
	7	953,603	510,515	-	-	-	-	-	-	-	-	-	272,149	140,802	42,458	-	-	134,640	38,145	63,408	19,115	12,739	79,010
	8	948,549	590,166	-	-	-	-	-	-	-	-	-	257,311	114,868	46,555	-	-	144,582	42,285	68,052	16,963	11,424	53,936
	9	1,013,927	676,856	-	-	-	-	-	-	-	-	-	270,561	114,804	44,439	-	-	140,359	45,894	65,019	11,757	14,765	48,451
	10	1,239,471	670,042	-	-	-	-	-	-	-	-	-	272,378	144,582	56,165	-	-	128,881	47,845	60,761	14,455	8,511	232,864
	11	1,026,684	630,059	-	-	-	-	-	-	-	-	-	278,363	128,492	44,619	-	-	157,514	42,830	74,845	19,555	8,712	64,078
	12	888,495	594,949	-	-	-	-	-	-	-	-	-	293,955	140,842	38,027	-	-	154,066	41,040	65,816	41,924	9,723	23,693
	1月	1,026,557	545,635	-	-	-	-	-	-	-	-	-	265,979	136,896	54,454	-	-	117,604	55,043	49,017	24,526	10,381	156,181
	2	1,047,111	647,350	-	-	-	-	-	-	-	-	-	314,519	145,677	35,716	-	-	165,841	55,884	61,024	30,315	12,655	60,512
	3	1,110,674	734,685	-	-	-	-	-	-	-	-	-	330,270	148,265	59,023	-	-	182,719	51,490	105,210	23,542	14,662	35,187
	4	886,987	578,102	-	-	-	-	-	-	-	-	-	215,893	125,008	45,204	-	-	99,244	47,221	56,871	9,307	5,044	56,394
	5	1,030,287	636,939	-	-	-	-	-	-	-	-	-	326,116	134,978	57,587	-	-	188,248	73,312	75,025	24,296	14,390	46,724
	6	1,049,407	648,540	-	-	-	-	-	-	-	-	-	282,558	130,546	59,264	-	-	155,190	52,584	74,904	14,380	14,079	55,992
	7	1,048,059	647,180	-	-	-	-	-	-	-	-	-	294,922	135,148	57,833	-	-	163,293	46,319	75,211	22,433	16,771	7,519
	8	1,131,062	679,365	-	-	-	-	-	-	-	-	-	337,333	134,242	52,044	-	-	201,470	64,602	81,482	47,845	12,913	40,680
	9	1,059,246	646,917	-	-	-	-	-	-	-	-	-	336,894	145,359	61,870	-	-	171,765	59,419	78,760	23,498	10,721	49,016
	10	1,032,893	611,640	-	-	-	-	-	-	-	-	-	299,646	115,788	44,848	-	-	189,932	66,346	75,057	33,779	13,719	65,104
	11	1,042,152	663,228	-	-	-	-	-	-	-	-	-	252,632	112,658	36,593	-	-	147,631	52,914	47,551	20,955	14,863	68,529
	12	1,143,336	742,021	-	-	-	-	-	-	-	-	-	383,631	217,585	74,229	-	-	170,613	57,878	82,336	23,886	11,388	42,740
	1月	1,137,327	753,597	-	-	-	-	-	-	-	-	-	293,540	113,203	56,149	-	-	172,771	74,775	78,337	15,357	12,591	54,965
	2	1,088,627	765,948	-	-	-	-	-	-	-	-	-	257,062	129,260	54,268	-	-	125,628	31,690	69,845	16,609	12,348	42,885
	3	1,093,151	748,162	-	-	-	-	-	-	-	-	-	277,152	130,304	41,577	-	-	137,700	53,466	68,008	15,112	10,851	54,341
	4	1,041,294	724,739	-	-	-	-	-	-	-	-	-	257,149	120,381	45,899	-	-	147,463	62,047	69,538	14,788	8,859	22,030
	5	1,132,613	761,723	-	-	-	-	-	-	-	-	-	290,380	131,734	60,550	-	-	159,596	45,341	76,622	20,412	12,374	52,283
	6	1,189,906	756,723	-	-	-	-	-	-	-	-	-	337,697	160,978	53,778	-	-	182,159	78,504	70,989	29,686	10,923	41,217
	7	1,218,504	752,225	-	-	-	-	-	-	-	-	-	321,825	133,269	60,719	-	-	191,461	76,016	80,029	21,154	12,638	44,102
	8	1,182,469	769,691	-	-	-	-	-	-	-	-	-	309,051	148,781	60,260	-	-	166,509	47,074	78,224	20,221	13,843	43,855
	9	1,290,831	810,504	-	-	-	-	-	-	-	-	-	388,599	163,223	76,360	-	-	205,806	66,925	84,368	30,491	26,514	81,435
	10	1,284,852	839,784	-	-	-	-	-	-	-	-	-	307,665	127,704	54,250	-	-	179,268	55,890	87,908	19,979	17,743	73,089
	11	1,353,495	905,815	-	-	-	-	-	-	-	-	-	336,673	136,818	59,039	-	-	204,264	69,513	88,264	22,064	16,096	35,689
	12	1,226,733	842,226	-	-	-	-	-	-	-	-	-	345,327	142,610	59,300	-	-	202,074	73,056	88,040	19,886	24,238	36,570
	1月	1,284,982	891,704	-	-	-	-	-	-	-	-	-	337,098	163,229	56,082	-	-	167,143	60,878	87,494	24,744	18,236	20,298
	2	1,326,065	885,956	-	-	-	-	-	-	-	-	-	384,739	153,476	70,567	-	-	229,182	67,568	108,260	26,215	18,131	42,064
	3	1,239,714	856,841	-	-	-	-	-	-	-	-	-	339,760	139,767	58,432	-	-	213,326	82,699	81,323	28,430	15,370	2,023
	4	1,426,765	990,320	-	-	-	-	-	-	-	-	-	358,279	166,107	79,613	-	-	204,510	62,024	83,072	29,988	29,970	36,047
	5	1,364,767	945,472	-	-	-	-	-	-	-	-	-	335,176	144,457	62,615	-	-	191,291	61,397	84,448	20,682	19,499	47,671
	6	1,433,939	990,383	-	-	-	-	-	-	-	-	-	354,135	125,661	66,349	-	-	221,348	96,688	92,816	26,837	16,488	33,022
	7	1,655,073	1,110,745	-	-	-	-	-	-	-	-	-	378,989	182,132	72,745	-	-	202,162	79,568	86,362	20,833	16,711	56,289
	8	1,401,473	969,360	-	-	-	-	-	-	-	-	-	321,505	172,885	73,049	-	-	161,576	40,277	69,676	18,078	20,939	51,577
	9	1,257,060	897,015	-	-	-	-	-	-	-	-	-	297,291	102,648	50,257	-	-	188,330	54,618	84,474	21,765	23,117	39,746
	10	1,638,384	1,135,709	-	-	-	-	-	-	-	-	-	380,132	178,161	79,984	-	-	203,866	63,128	91,926	22,498	26,156	50,583
	11	1,490,398	1,021,011	-	-	-	-	-	-	-	-	-	345,342	169,449	80,803	-	-	187,952	60,937	73,878	24,846	19,600	44,889
	12	2,133,657	1,796,942	-	-	-	-	-	-	-	-	-	294,156	137,484	77,195	-	-	157,473	70,880	64,914	14,475	14,428	48,409
	平成元年	1,685,870	1,164,081	-	-	-	-	-	-	-	-	-	369,857	167,967	53,863	-	-	195,721	53,266	98,381	73,605	13,793	74,266
	1月	2,391,913	1,008,460	-	-	-	-	-	-	-	-	-	306,170	119,274	49,107	-	-	185,262	72,422	64,972	16,808	13,200	54,037
	2	1,336,394	942,947	-	-	-	-	-	-	-	-	-	309,625	135,929	59,840	-	-	170,801	61,782	78,003	16,531	18,610	50,003
	3	1,757,884	1,239,736	-	-	-	-	-	-	-	-	-	386,200	144,200	55,957	-	-	254,301	83,259	108,272	36,740	21,770	75,483
	4	1,736,490	1,190,355	-	-	-	-	-	-	-	-	-	448,831	170,243	53,195	-	-	270,087	94,721	119,384	26,970	17,270	52,557
	5	1,662,633	1,170,543	-	-	-	-	-	-	-	-	-	374,734	177,715	70,171	-	-	203,596	70,301	96,308	18,650	23,402	66,544
	6	1,784,220	1,291,772	-	-	-	-	-	-	-	-	-	329,064	131,990	52,103	-	-	198,658	61,213	102,558	19,961	15,548	64,003
	7	1,773,325	1,269,486	-	-	-	-	-	-	-	-	-	393,335	170,579	64,899	-	-	227,					

3年	11	2,384,344	1,719,009	-	-	-	-	-	-	-	474,656	203,605	72,156	-	-	279,152	83,164	122,776	38,408	29,051	116,018
	12	2,219,979	1,666,427	-	-	-	-	-	-	-	506,391	199,824	81,616	-	-	309,013	84,632	128,143	73,486	22,419	35,965
	1	2,123,901	1,531,022	-	-	-	-	-	-	-	475,139	161,208	88,929	-	-	290,300	119,087	119,493	25,274	24,683	45,837
	2	2,322,512	1,744,396	-	-	-	-	-	-	-	498,734	242,087	95,485	-	-	243,102	54,203	30,799	15,500	36,191	55,720
	3	2,190,703	1,598,691	-	-	-	-	-	-	-	502,834	223,377	81,135	-	-	262,360	104,013	126,138	22,985	23,008	69,139
	4	2,384,968	1,754,595	-	-	-	-	-	-	-	524,764	248,030	79,723	-	-	277,848	82,263	135,757	30,156	31,545	45,542
	5	2,256,215	1,666,754	-	-	-	-	-	-	-	505,947	240,563	85,559	-	-	279,808	96,880	122,815	31,062	11,382	47,066
	6	2,149,519	1,582,117	-	-	-	-	-	-	-	447,107	192,281	87,103	-	-	266,874	89,176	124,453	30,308	22,674	76,222
	7	2,199,358	1,611,892	-	-	-	-	-	-	-	467,252	188,997	94,994	-	-	278,822	84,644	125,861	36,655	34,126	45,436
	8	2,146,453	1,567,793	-	-	-	-	-	-	-	525,525	203,777	74,834	-	-	316,998	86,684	173,213	39,488	24,008	65,766
	9	2,281,589	1,686,829	-	-	-	-	-	-	-	493,444	200,428	75,318	-	-	304,731	102,417	139,229	34,851	23,673	37,106
	10	2,054,473	1,451,364	-	-	-	-	-	-	-	510,923	203,249	79,042	-	-	306,614	104,835	115,662	33,560	48,437	42,174
	11	1,940,841	1,231,754	-	-	-	-	-	-	-	532,832	192,203	91,364	-	-	323,046	109,889	143,901	31,231	44,142	77,553
	12	2,040,634	1,420,294	-	-	-	-	-	-	-	506,436	212,820	82,223	-	-	293,519	83,580	139,533	30,677	38,904	84,933
4年	1	1,877,223	1,316,414	-	-	-	-	-	-	-	455,794	207,637	71,146	-	-	222,905	82,356	112,781	37,773	9,151	50,043
	2	2,510,884	1,821,171	-	-	-	-	-	-	-	599,145	258,958	93,332	-	-	328,337	81,408	162,937	41,546	29,593	55,616
	3	2,454,586	1,830,568	-	-	-	-	-	-	-	503,514	190,363	78,609	-	-	338,673	75,343	117,885	41,672	77,348	133,626
	4	1,761,120	1,256,265	-	-	-	-	-	-	-	422,848	205,901	90,295	-	-	214,099	80,350	117,126	18,306	18,812	28,917
	5	1,866,344	1,186,978	-	-	-	-	-	-	-	550,321	233,006	101,476	-	-	328,087	94,272	150,447	33,026	41,108	72,175
	6	1,864,538	1,216,417	-	-	-	-	-	-	-	559,543	364,226	74,919	-	-	246,616	78,786	124,377	18,135	24,707	43,397
	7	1,973,642	1,219,253	-	-	-	-	-	-	-	623,889	321,531	95,300	-	-	317,631	87,775	163,045	33,000	26,795	85,657
	8	2,054,684	1,071,029	-	-	-	-	-	-	-	792,144	277,996	101,713	-	-	498,473	315,707	161,243	29,982	73,539	124,571
	9	2,020,084	1,266,138	-	-	-	-	-	-	-	676,118	271,983	110,032	-	-	420,776	161,318	185,661	48,692	35,301	▲ 29,159
	10	1,955,596	1,266,242	-	-	-	-	-	-	-	548,216	201,715	106,440	-	-	344,233	118,023	165,956	37,732	24,078	89,339
	11	1,844,559	1,178,748	-	-	-	-	-	-	-	537,068	213,861	85,510	-	-	314,328	116,948	141,528	28,864	22,041	51,442
	12	1,677,133	1,046,484	-	-	-	-	-	-	-	536,063	232,409	99,999	-	-	298,881	126,433	133,322	26,096	19,717	54,433
5年	1	2,020,465	1,270,274	-	-	-	-	-	-	-	714,357	307,868	178,409	-	-	379,836	135,162	176,074	24,799	29,641	42,511
	2	1,807,103	1,123,596	-	-	-	-	-	-	-	583,155	244,069	99,799	-	-	331,318	96,669	144,306	37,419	42,458	62,067
	3	1,901,528	1,265,769	-	-	-	-	-	-	-	544,427	216,031	104,384	-	-	330,295	98,274	175,222	39,217	30,187	48,969
	4	1,539,226	953,552	-	-	-	-	-	-	-	520,305	234,816	109,996	-	-	288,113	98,069	153,484	27,005	18,978	48,428
	5	1,639,687	994,881	-	-	-	-	-	-	-	568,975	198,107	96,830	-	-	372,671	101,253	180,090	29,853	34,618	35,275
	6	1,604,568	955,027	-	-	-	-	-	-	-	578,059	183,245	114,857	-	-	405,693	112,857	205,807	34,933	30,847	34,954
	7	1,352,084	796,948	-	-	-	-	-	-	-	452,065	201,697	104,309	-	-	270,578	87,034	125,461	28,033	18,656	69,607
	8	1,520,523	953,891	-	-	-	-	-	-	-	469,624	184,465	74,570	-	-	282,036	93,547	126,862	36,534	27,513	86,126
	9	1,624,937	946,960	-	-	-	-	-	-	-	530,708	242,841	105,461	-	-	286,799	120,011	121,569	22,595	25,213	87,070
	10	1,518,596	905,644	-	-	-	-	-	-	-	512,194	235,196	100,787	-	-	275,036	74,111	147,177	24,646	37,012	62,850
	11	1,569,216	890,329	-	-	-	-	-	-	-	525,784	256,229	93,053	-	-	274,563	94,770	113,907	29,349	27,800	66,530
	12	1,609,573	988,670	-	-	-	-	-	-	-	529,735	231,528	94,327	-	-	290,479	74,994	104,027	46,215	30,534	69,344
6年	1	1,739,875	1,011,437	-	-	-	-	-	-	-	621,279	250,924	107,236	-	-	335,992	98,307	169,914	31,440	46,493	80,387
	2	1,621,582	990,419	-	-	-	-	-	-	-	519,642	195,279	84,339	-	-	325,674	104,564	157,781	36,849	20,614	70,880
	3	1,583,226	911,332	-	-	-	-	-	-	-	582,248	248,039	136,572	-	-	336,080	112,112	153,906	42,747	30,721	55,917
	4	1,541,062	879,070	-	-	-	-	-	-	-	577,424	207,883	106,734	-	-	396,297	100,614	200,954	53,710	32,137	69,381
	5	1,373,028	863,073	-	-	-	-	-	-	-	388,944	175,689	75,266	-	-	236,878	70,836	109,163	11,196	36,761	67,436
	6	1,560,920	923,294	-	-	-	-	-	-	-	495,966	206,958	81,833	-	-	305,886	92,812	140,618	51,281	22,035	88,180
	7	1,599,917	984,013	-	-	-	-	-	-	-	513,343	175,166	72,898	-	-	360,659	117,862	144,664	40,495	33,237	63,786
	8	1,686,795	1,096,669	-	-	-	-	-	-	-	521,081	190,997	86,960	-	-	319,213	92,750	152,925	26,224	55,398	52,202
	9	1,498,737	927,852	-	-	-	-	-	-	-	487,208	172,045	54,022	-	-	307,057	94,460	137,808	38,987	33,458	3,965
	10	1,628,329	968,339	-	-	-	-	-	-	-	516,605	240,891	101,515	-	-	273,443	101,525	134,414	26,381	13,539	95,029
	11	1,900,905	1,025,093	-	-	-	-	-	-	-	696,774	274,080	153,779	-	-	406,479	161,000	177,537	52,690	22,533	81,441
	12	1,707,282	1,052,318	-	-	-	-	-	-	-	553,743	263,397	155,260	-	-	291,568	101,696	142,569	27,839	29,665	100,462
7年	1	1,459,392	791,777	-	-	-	-	-	-	-	503,661	199,400	84,943	-	-	289,666	98,364	136,194	25,411	26,784	120,380
	2	1,543,756	853,561	-	-	-	-	-	-	-	502,427	192,386	89,258	-	-	307,163	92,984	143,395	35,950	38,648	124,891
	3	1,593,550	951,388	-	-	-	-	-	-	-	504,458	218,174	100,391	-	-	285,620	98,438	133,337	23,452	32,703	117,249
	4	1,661,458	1,017,746	-	-	-	-	-	-	-	551,030	278,306	117,083	-	-	285,900	82,774	150,115	30,467	38,773	93,746
	5	1,773,245	1,036,661	-	-	-	-	-	-	-	562,541	354,766	140,736	-	-	305,166	93,581	128,328	24,036	44,663	106,759
	6	1,762,502	999,949	-	-	-	-	-	-	-	575,267	243,728	128,999	-	-	345,687	84,706	180,053	28,019	44,939	107,354
	7	1,627,156	897,514	-	-	-	-	-	-	-	629,708	241,872	122,417	-	-	423,959	83,555	184,988	88,303	41,144	67,487
	8	1,519,907	897,579	-	-	-	-	-	-	-	527,611	267,564	138,892	-	-	284,738	87,178	135,904	30,134	31,749	43,734
	9	1,547,725	870,404	-	-	-	-	-	-	-	530,291	250,210	120,281	-	-	262,078	101,889	102,935	24,806	36,598	105,767
	10	1,662,620	1,041,460	-	-	-	-	-	-	-	517,778	190,224	87,917	-	-	318,215	85,051	169,312	32,523	37,564	67,719
	11	1,712,522	900,043	-	-	-	-	-	-	-	619,833	235,454	133,531	-	-	364,819	108,192	182,353	36,523	38,332	107,546
	12	1,781,929	942,211	-	-	-	-	-	-	-	754,159	344,939	170,699	-	-	401,103	152,316	177,872	39,579	56,455	94,753
8年	1	1,731,618	878,900	-	-	-	-	-	-	-	745,984	249,738	132,879	-	-	478,876	176,224	153,698	72,617	50,837	83,556
	2	1,709,514	1,012,262	-	-	-	-	-	-	-	588,449	290,932	165,822	-	-	301,427	100,268	139,896	29,420	36,417	61,457
	3	1,561,440	891,716	-	-	-	-	-	-	-	5										

	2	1,495,227	909,200	-	-	-	-	-	-	-	-	-	-	-	-	449,467	196,794	101,136	-	-	-	-	-	257,083	68,708	117,156	26,431	63,126	82,052	
	3	1,596,014	980,297	-	-	-	-	-	-	-	-	-	-	-	-	470,765	215,725	110,525	-	-	-	-	-	262,991	78,797	123,389	23,043	36,129	152,187	
	4	1,565,150	923,310	-	-	-	-	-	-	-	-	-	-	-	-	445,421	215,966	101,393	-	-	-	-	-	274,354	87,920	118,313	19,278	37,681	88,652	
	5	1,763,529	1,161,438	-	-	-	-	-	-	-	-	-	-	-	-	450,931	233,507	83,813	-	-	-	-	-	246,246	56,590	131,830	23,330	17,405	108,652	
	6	1,505,454	891,138	-	-	-	-	-	-	-	-	-	-	-	-	508,563	265,902	159,513	-	-	-	-	-	259,105	96,193	119,619	30,002	15,969	54,149	
	7	1,685,035	1,015,151	-	-	-	-	-	-	-	-	-	-	-	-	482,090	208,548	122,618	-	-	-	-	-	300,738	91,434	124,561	29,302	40,025	130,258	
	8	1,619,659	953,965	-	-	-	-	-	-	-	-	-	-	-	-	499,713	222,673	106,992	-	-	-	-	-	279,828	98,483	124,806	22,580	30,711	104,589	
	9	1,615,467	1,036,916	-	-	-	-	-	-	-	-	-	-	-	-	442,430	171,485	57,026	-	-	-	-	-	260,411	80,474	119,144	23,769	37,632	106,261	
	10	1,574,766	1,000,376	-	-	-	-	-	-	-	-	-	-	-	-	460,524	185,469	107,612	-	-	-	-	-	269,118	93,991	119,767	30,194	28,550	73,003	
	11	1,662,865	1,035,135	-	-	-	-	-	-	-	-	-	-	-	-	484,902	202,753	86,589	-	-	-	-	-	278,382	81,825	116,811	25,049	55,735	79,695	
	12	1,456,663	925,314	-	-	-	-	-	-	-	-	-	-	-	-	460,832	232,619	108,961	-	-	-	-	-	238,957	81,936	101,615	19,584	50,534	60,326	
10年	1月	1,409,648	978,432	-	-	-	-	-	-	-	-	-	-	-	-	362,064	186,328	93,698	-	-	-	-	-	168,691	43,937	60,255	22,284	37,714	61,030	
	2	1,463,785	910,912	-	-	-	-	-	-	-	-	-	-	-	-	410,219	167,455	93,586	-	-	-	-	-	247,829	111,721	99,792	22,294	21,703	89,145	
	3	1,394,285	878,885	-	-	-	-	-	-	-	-	-	-	-	-	401,625	172,584	93,638	-	-	-	-	-	230,088	92,366	85,239	24,099	31,203	85,909	
	4	1,414,584	876,723	-	-	-	-	-	-	-	-	-	-	-	-	288,527	130,178	69,924	-	-	-	-	-	198,352	70,450	90,933	18,996	22,613	93,129	
	5	1,335,253	882,005	-	-	-	-	-	-	-	-	-	-	-	-	409,433	157,824	76,397	-	-	-	-	-	237,947	72,500	92,537	25,059	33,185	40,799	
	6	1,468,450	918,885	-	-	-	-	-	-	-	-	-	-	-	-	438,379	166,512	84,184	-	-	-	-	-	267,195	69,597	129,760	27,913	39,443	65,581	
	7	1,451,024	886,423	-	-	-	-	-	-	-	-	-	-	-	-	456,914	271,684	110,067	-	-	-	-	-	210,960	69,495	86,646	22,155	29,969	71,829	
	8	1,374,462	835,371	-	-	-	-	-	-	-	-	-	-	-	-	433,739	201,001	93,935	-	-	-	-	-	237,288	76,502	106,748	19,276	20,427	49,842	
	9	1,454,426	841,387	-	-	-	-	-	-	-	-	-	-	-	-	527,537	284,675	156,301	-	-	-	-	-	229,500	72,789	112,902	20,206	20,730	41,786	
	10	1,387,281	803,141	-	-	-	-	-	-	-	-	-	-	-	-	476,932	219,003	111,723	-	-	-	-	-	257,316	74,492	104,035	41,590	36,829	57,981	
	11	1,286,482	805,372	-	-	-	-	-	-	-	-	-	-	-	-	422,586	229,002	112,795	-	-	-	-	-	202,933	63,506	91,431	23,920	21,689	17,006	
	12	1,440,954	816,246	-	-	-	-	-	-	-	-	-	-	-	-	433,422	176,630	88,126	-	-	-	-	-	260,507	69,580	96,599	30,600	67,303	155,245	
11年	1月	1,219,933	764,234	-	-	-	-	-	-	-	-	-	-	-	-	424,587	187,770	71,099	-	-	-	-	-	226,316	65,286	120,568	20,936	8,820	52,351	
	2	1,403,744	806,483	-	-	-	-	-	-	-	-	-	-	-	-	502,772	225,759	109,545	-	-	-	-	-	279,667	66,059	133,193	58,024	30,282	42,722	
	3	1,435,304	890,892	-	-	-	-	-	-	-	-	-	-	-	-	505,077	235,933	107,240	-	-	-	-	-	265,934	65,224	139,715	35,434	29,346	▲ 81,243	
	4	1,263,927	685,278	-	-	-	-	-	-	-	-	-	-	-	-	478,361	319,469	113,322	-	-	-	-	-	249,685	68,663	101,221	36,591	27,717	51,052	
	5月	1,241,834	754,973	-	-	-	-	-	-	-	-	-	-	-	-	448,999	185,081	89,269	-	-	-	-	-	250,426	72,655	97,001	36,485	19,640	48,201	
	6	1,218,405	772,584	-	-	-	-	-	-	-	-	-	-	-	-	371,272	190,308	115,970	-	-	-	-	-	193,494	59,312	83,828	20,383	37,661	41,850	
	7	1,181,007	731,389	-	-	-	-	-	-	-	-	-	-	-	-	389,718	197,778	84,520	-	-	-	-	-	208,839	57,434	94,016	28,899	22,674	30,494	
	8	1,276,916	783,501	-	-	-	-	-	-	-	-	-	-	-	-	404,316	196,183	103,825	-	-	-	-	-	211,288	71,434	86,573	22,387	22,342	38,189	
	9	1,378,071	848,247	-	-	-	-	-	-	-	-	-	-	-	-	451,131	218,402	113,161	-	-	-	-	-	227,228	64,348	111,674	32,510	14,420	25,380	
	10	1,180,713	789,667	-	-	-	-	-	-	-	-	-	-	-	-	316,213	147,707	84,836	-	-	-	-	-	172,087	60,031	64,521	16,575	25,717	45,112	
	11	1,316,993	828,869	-	-	-	-	-	-	-	-	-	-	-	-	374,414	211,467	109,739	-	-	-	-	-	169,529	57,463	76,320	20,823	17,477	66,094	
	12	1,269,525	888,809	-	-	-	-	-	-	-	-	-	-	-	-	295,639	158,049	63,430	-	-	-	-	-	148,075	56,114	73,123	14,506	15,846	41,009	
12年	1月	1,494,487	1,061,485	154,371	909,033	1,962	89,319	56,413	70,929	37,249	330,871	187,623	119,599	411,804	208,514	91,344	90,772	12,519	190,193	69,940	74,294	21,187	11,921	190,193	69,940	74,294	21,187	11,921	41,616	
	2	1,434,004	874,508	132,277	735,140	3,148	86,780	44,140	69,852	16,823	229,199	194,516	90,976	434,074	227,836	86,568	90,278	47,132	202,547	65,995	77,273	7,908	74,886	202,547	65,995	77,273	7,908	74,886	66,484	
	3	1,502,258	1,020,066	141,836	826,545	3,307	98,751	45,784	66,647	16,165	275,404	200,561	125,109	408,926	193,344	94,891	77,530	16,694	217,610	65,585	88,463	40,130	22,940	217,610	65,585	88,463	40,130	22,940	21,220	
	4	1,279,848	827,719	129,432	721,366	1,617	96,734	28,880	50,482	25,215	209,802	178,367	84,645	299,664	180,544	73,246	83,496	15,881	172,636	54,758	83,238	10,648	23,950	172,636	54,758	83,238	10,648	23,950	45,080	
	5	1,407,660	841,558	180,438	644,664	1,844	75,341	31,068	48,305	17,248	197,914	199,717	70,416	501,432	172,588	114,854	63,619	16,604	284,834	50,042	145,250	45,179	25,860	16,604	284,834	50,042	145,250	45,179	25,860	54,506
	6	1,371,537	813,595	139,741	681,790	2,838	57,461	18,928	61,119	24,333	206,358	219,348	75,780	378,048	251,200	83,318	115,022	62,052	160,125	51,217	78,085	14,496	23,239	160,125	51,217	78,085	14,496	23,239	118,064	
	7	1,106,102	693,111	135,002	556,341	1,023	88,066	20,099	42,612	15,800	171,425	152,477	69,398	345,630	174,223	94,157	52,438	24,698	184,054	56,264	68,707	19,853	38,926	184,054	56,264	68,707	19,853	38,926	18,570	
	8	1,222,944	784,357	149,423	643,968	1,638	62,357	18,076	58,106	21,588	178,318	211,857	76,742	334,427	159,280	74,434	45,701	38,305	174,836	38,694	69,871	32,353	22,684	174,836	38,694	69,871	32,353	22,684	43,413	
	9	1,255,402	798,174	134,915	659,197	1,593	64,941	29,719	43,081	20,519	250,151	176,161	66,591	344,919	177,006	80,699	50,670	36,487	165,217	54,205	64,588	28,290	20,973	165,217	54,205	64,588	28,290	20,973	52,603	
	10	1,224,498	730,992	156,150	569,664	873	68,587	16,501	38,505	18,411	220,720	159,325	49,881	393,526	208,655	70,179	88,801	49,069	185,921	55,022	79,465	15,256	27,162	185,921	55,022	79,465	15,256	27,162	32,328	
	11	1,296,113	786,804	162,276	621,185	2,657	69,529	18,660	39,696	17,950	202,462	214,842	62,841	390,932	181,674	87,713	70,413	21,579	198,315	83,036	77,853	28,167	16,602	198,315	83,036	77,853	28,167	16,602	61,713	
	12	1,242,159	758,793	157,453	603,704	1,360	82,242	31,989	33,795	21,561	176,522	196,418	59,932	347,978	200,295	104,700	63,719	23,040	159,992	50,964	72,890	22,806	19,551	159,992	50,964	72,890	22,806	19,551	62,486	
13年	1月	1,303,298	749,392	151,171	583,543	1,311	51,439	30,432	31,560	15,232	218,997	173,767	52,875	386,413	187,893	115,765	56,323	16,943	188,880	58,661	70,911	24,331	33,788	188,880	58,661	70,911	24,331	33,788	126,633	
	2	1,227,196	801,																											

	5	1,096,978	780,646	-	-	-	-	-	-	243,277	136,724	74,466	-	-	101,632	27,203	45,028	23,820	6,078	49,682
	6	1,019,250	699,037	-	-	-	-	-	-	131,299	132,784	72,182	-	-	131,299	36,715	64,237	22,898	12,159	27,149
	7	1,047,174	683,800	-	-	-	-	-	-	249,729	133,198	57,375	-	-	122,214	38,422	55,496	14,025	12,150	48,479
	8	1,048,489	699,741	-	-	-	-	-	-	260,711	152,494	88,513	-	-	120,191	29,665	54,611	18,562	13,442	35,230
	9	1,033,021	692,135	-	-	-	-	-	-	256,627	144,218	78,660	-	-	114,176	30,793	47,627	21,437	13,571	45,245
	10	1,104,513	737,076	-	-	-	-	-	-	257,065	146,242	66,893	-	-	112,625	39,697	50,700	7,296	9,363	55,391
	11	1,096,483	783,207	-	-	-	-	-	-	229,932	137,537	75,162	-	-	100,309	30,203	49,636	15,293	11,963	45,842
	12	1,091,768	724,941	-	-	-	-	-	-	245,101	135,822	65,699	-	-	109,273	29,826	49,604	21,443	11,858	66,692
16年	1月	1,059,251	684,708	-	-	-	-	-	-	304,292	188,426	90,829	-	-	116,795	36,730	64,111	14,585	8,784	58,432
	2	1,010,425	674,690	-	-	-	-	-	-	236,095	137,454	72,819	-	-	101,423	33,056	49,183	15,939	6,752	56,393
	3	1,039,339	702,790	-	-	-	-	-	-	243,025	132,498	72,301	-	-	103,129	21,922	50,638	16,807	7,605	9,405
	4	1,112,653	810,719	-	-	-	-	-	-	197,994	75,219	48,528	-	-	117,737	31,451	59,260	18,251	7,291	64,225
	5	1,099,297	782,659	-	-	-	-	-	-	234,735	123,543	64,563	-	-	112,358	31,262	40,269	21,946	17,039	48,357
	6	1,178,861	855,501	-	-	-	-	-	-	216,321	100,201	37,277	-	-	107,748	34,266	52,340	18,354	10,718	68,154
	7	1,129,663	773,810	-	-	-	-	-	-	238,998	148,048	60,336	-	-	101,132	26,606	41,929	13,542	20,512	42,988
	8	1,114,190	788,084	-	-	-	-	-	-	212,972	139,349	52,922	-	-	85,219	18,448	37,496	20,652	4,348	67,700
	9	1,124,284	847,362	-	-	-	-	-	-	198,454	114,878	53,736	-	-	85,490	15,350	46,585	10,149	6,642	39,510
	10	1,122,490	799,898	-	-	-	-	-	-	235,272	154,563	74,302	-	-	93,091	22,469	42,214	11,857	9,812	46,100
	11	1,125,931	804,361	-	-	-	-	-	-	251,544	160,236	56,939	-	-	99,492	21,791	54,556	12,349	14,768	34,195
	12	1,084,962	793,646	-	-	-	-	-	-	199,184	108,782	77,206	-	-	90,086	23,358	47,636	13,429	6,496	30,611
17年	1月	1,199,334	859,290	-	-	-	-	-	-	223,260	111,730	51,771	-	-	104,047	25,762	44,666	35,033	8,298	95,713
	2	860,796	578,434	-	-	-	-	-	-	195,628	107,892	56,688	-	-	92,081	30,155	45,263	16,993	3,507	46,480
	3	1,324,059	776,918	-	-	-	-	-	-	377,499	242,343	162,280	-	-	103,777	28,175	54,721	12,710	9,328	97,833
	4	1,179,640	894,702	-	-	-	-	-	-	219,506	132,628	78,328	-	-	82,448	23,452	41,367	12,117	9,441	40,262
	5	1,093,832	759,263	-	-	-	-	-	-	245,683	162,100	88,678	-	-	100,068	26,514	50,191	13,211	587	45,772
	6	1,084,912	814,416	-	-	-	-	-	-	190,712	122,128	33,190	-	-	71,838	22,514	38,149	18,073	2,559	40,171
	7	1,384,767	838,877	-	-	-	-	-	-	275,705	163,392	67,205	-	-	118,983	24,871	50,082	30,175	9,050	172,285
	8	1,125,740	834,461	-	-	-	-	-	-	222,086	125,269	52,732	-	-	101,251	26,930	47,959	15,777	9,335	18,575
	9	1,137,055	822,826	-	-	-	-	-	-	259,582	152,904	95,331	-	-	111,379	25,757	50,943	23,646	5,609	36,341
	10	1,127,770	800,458	-	-	-	-	-	-	244,027	114,120	62,374	-	-	124,320	42,025	45,775	24,396	4,089	55,487
	11	1,066,326	781,463	-	-	-	-	-	-	180,576	98,880	44,523	-	-	84,108	23,799	36,252	12,650	8,033	69,706
	12	1,233,062	889,578	-	-	-	-	-	-	209,868	112,412	45,968	-	-	100,907	32,193	37,716	21,400	7,273	72,744
18年	1月	933,065	729,525	-	-	-	-	-	-	143,174	79,452	44,806	-	-	60,285	20,134	27,081	18,233	2,309	48,383
	2	1,055,432	802,337	-	-	-	-	-	-	158,965	72,700	46,596	-	-	94,124	17,388	32,441	31,105	8,545	68,234
	3	1,134,682	819,764	-	-	-	-	-	-	186,235	106,683	49,489	-	-	78,536	32,513	28,787	11,830	8,819	63,328
	4	1,174,621	864,624	-	-	-	-	-	-	232,006	139,611	131,387	-	-	85,708	24,376	41,247	11,332	5,231	51,568
	5	1,110,464	824,535	-	-	-	-	-	-	134,703	69,330	39,138	-	-	68,527	16,268	36,419	11,542	5,027	45,402
	6	1,092,419	801,709	-	-	-	-	-	-	177,614	119,368	83,033	-	-	59,792	15,104	30,321	11,658	14,893	70,034
	7	1,118,460	799,326	-	-	-	-	-	-	139,954	63,546	44,622	-	-	74,171	17,030	29,162	17,250	8,319	105,864
	8	1,261,302	907,418	-	-	-	-	-	-	190,072	109,949	64,264	-	-	85,875	17,400	37,880	15,677	14,405	90,271
	9	1,248,144	783,851	-	-	-	-	-	-	189,238	112,620	72,358	-	-	81,178	21,713	29,631	19,939	8,333	343,680
	10	1,208,201	992,732	-	-	-	-	-	-	172,003	98,025	38,030	-	-	71,404	21,772	15,009	20,672	11,791	61,233
	11	1,157,300	880,796	-	-	-	-	-	-	194,618	106,934	69,918	-	-	91,099	25,371	29,742	21,346	2,239	68,463
	12	1,120,914	854,035	-	-	-	-	-	-	155,201	92,353	40,157	-	-	67,047	15,487	27,352	10,299	8,223	45,975
19年	1月	1,243,341	991,668	-	-	-	-	-	-	176,585	106,606	50,307	-	-	66,844	14,304	28,623	34,042	5,130	49,214
	2	1,121,458	828,723	-	-	-	-	-	-	207,255	137,667	47,641	-	-	60,751	12,395	37,839	8,043	11,061	51,595
	3	1,150,913	829,660	-	-	-	-	-	-	162,978	106,380	56,109	-	-	53,872	2,614	23,329	15,821	6,049	72,104
	4	1,203,709	904,340	-	-	-	-	-	-	198,230	154,178	64,321	-	-	41,722	13,451	17,670	8,299	7,110	54,631
	5	1,643,389	1,117,847	-	-	-	-	-	-	205,645	194,486	58,559	-	-	45,131	16,441	19,188	6,609	3,336	139,096
	6	1,390,051	1,135,709	-	-	-	-	-	-	173,193	119,784	67,923	-	-	58,238	14,333	24,590	30,495	2,773	65,223
	7	985,974	733,451	-	-	-	-	-	-	140,773	109,754	67,270	-	-	32,699	10,379	10,865	10,327	2,379	53,776
	8	1,099,045	799,509	-	-	-	-	-	-	159,061	99,012	57,846	-	-	66,336	45,030	11,220	6,650	2,927	68,973
	9	1,067,207	847,481	-	-	-	-	-	-	128,158	97,858	44,392	-	-	37,825	7,647	19,099	5,417	1,487	81,797
	10	934,492	775,575	-	-	-	-	-	-	110,734	76,664	28,814	-	-	35,104	1,217	19,583	7,032	383	67,179
	11	1,083,520	876,254	-	-	-	-	-	-	160,858	127,621	63,994	-	-	35,376	6,489	16,692	6,326	1,674	55,228
	12	1,178,429	838,980	-	-	-	-	-	-	198,700	171,454	75,431	-	-	51,555	4,637	22,492	11,512	3,149	83,769
20年	1月	1,218,764	875,179	-	-	-	-	-	-	237,591	173,913	82,518	-	-	60,459	30,855	22,383	6,063	5,238	76,380
	2	1,294,299	878,608	-	-	-	-	-	-	287,959	205,243	101,156	-	-	58,231	17,282	28,045	10,608	6,280	72,695
	3	1,232,191	858,098	-	-	-	-	-	-	162,528	120,641	52,414	-	-	34,425	585	17,035	8,600	2,037	137,882
	4	1,116,502	798,448	-	-	-	-	-	-	182,977	111,416	39,824	-	-	70,205	15,378	18,974	13,983	19,579	80,090
	5	1,253,892	887,672	-	-	-	-	-	-	183,329	140,470	60,681	-	-	61,621	8,771	30,439	23,609	139	68,177
	6	1,199,868	843,713	-	-	-	-	-	-	244,684	175,945	52,773	-	-	72,534	46,959	24,496	14,554	2,646	89,826
	7	1,415,454	1,023,955	-	-	-	-	-	-	288,849	228,002	136,292	-	-	62,175	15,028	25,559	8,529	5,846	65,500
	8	1,130,127	797,730	-	-	-	-	-	-	193,887	164,639	61,146	-	-	48,017	13,372	23,409	10,561	3,673	71,317
	9	1,163,585	880,588	-	-	-	-	-	-	125,904	88,246	50,631	-	-	45,228	11,612	17,809	12,407	2,276	196,814
	10	1,378,883	818,725	-	-	-	-	-	-	391,463	345,469	112,057	-	-	70,228	15,403	28,577	23,477	1,433	150,518
	11	976,161	795,972	-	-	-	-	-	-	173,599	124,401	65,649	-	-	56,326	20,148	24,957	1,975	1,971	24,890
	12	825,010	598,490	-	-	-	-	-	-	212,622	120,966	65,863	-	-	98,372	20,857	31,703	39,058	1,788	▲

	8	849,838	581,967	-	-	-	-	-	-	-	-	163,541	117,848	74,439	-	-	55,375	14,616	26,083	11,765	3,573	49,138
	9	1,031,548	792,877	-	-	-	-	-	-	-	-	194,553	155,221	73,151	-	-	62,706	25,810	24,704	13,542	2,578	17,009
	10	840,744	563,208	-	-	-	-	-	-	-	-	250,774	172,631	69,490	-	-	69,586	23,493	34,142	12,579	3,171	46,780
	11	839,213	577,676	-	-	-	-	-	-	-	-	214,152	141,132	45,189	-	-	73,669	17,536	31,421	11,308	1,558	42,870
	12	814,946	564,134	-	-	-	-	-	-	-	-	156,673	103,954	48,437	-	-	60,708	15,720	23,713	8,676	6,519	39,793
22年	1月	896,854	610,828	-	-	-	-	-	-	-	-	194,413	129,562	34,751	-	-	68,904	20,891	41,792	11,913	1,888	50,740
	2	757,581	523,521	-	-	-	-	-	-	-	-	181,309	115,321	55,505	-	-	61,953	16,154	31,360	11,819	3,240	4,562
	3	1,070,212	660,941	-	-	-	-	-	-	-	-	208,882	131,833	60,241	-	-	74,159	20,985	37,169	12,236	7,876	97,397
	4	638,966	410,670	-	-	-	-	-	-	-	-	155,446	87,506	44,130	-	-	68,190	16,670	44,802	13,200	3,699	37,006
	5	791,835	521,752	-	-	-	-	-	-	-	-	146,115	65,199	36,835	-	-	79,732	26,813	24,920	7,571	5,895	48,032
	6	794,305	560,617	-	-	-	-	-	-	-	-	170,761	96,509	44,868	-	-	67,901	20,739	29,031	10,282	14,891	30,383
	7	824,091	575,712	-	-	-	-	-	-	-	-	153,075	96,816	46,133	-	-	53,857	13,182	20,800	14,468	3,546	59,378
	8	825,657	586,217	-	-	-	-	-	-	-	-	171,770	115,403	45,063	-	-	60,120	12,129	21,042	25,031	1,607	23,282
	9	865,931	630,354	-	-	-	-	-	-	-	-	185,979	132,972	62,819	-	-	72,935	10,612	52,207	7,351	8,076	49,431
	10	786,371	605,123	-	-	-	-	-	-	-	-	140,423	99,377	33,631	-	-	35,724	17,855	14,878	5,247	4,483	51,966
	11	796,451	562,350	-	-	-	-	-	-	-	-	235,927	122,769	79,397	-	-	113,681	38,972	29,710	12,919	14,666	5,186
23年	1月	914,182	601,933	-	-	-	-	-	-	-	-	195,112	146,643	57,612	-	-	59,286	18,446	23,457	6,125	4,677	64,450
	2	788,947	536,469	-	-	-	-	-	-	-	-	165,223	98,012	43,502	-	-	70,746	16,826	18,329	10,158	21,489	43,145
	3	909,049	634,840	-	-	-	-	-	-	-	-	176,666	110,000	47,620	-	-	66,651	19,210	26,691	14,908	1,976	54,240
	4	952,357	656,078	-	-	-	-	-	-	-	-	155,481	90,874	38,656	-	-	64,128	8,689	32,321	9,934	6,493	22,361
	5	862,373	561,556	-	-	-	-	-	-	-	-	202,583	118,198	65,453	-	-	90,316	16,078	55,295	17,761	8,565	59,252
	6	956,296	606,258	-	-	-	-	-	-	-	-	204,970	181,670	43,061	-	-	51,815	10,856	26,805	18,395	1,827	71,596
	7	855,701	627,045	-	-	-	-	-	-	-	-	161,777	99,206	45,262	-	-	59,583	15,170	22,280	17,797	8,846	34,317
	8	877,803	649,202	-	-	-	-	-	-	-	-	166,645	102,795	48,957	-	-	61,753	16,434	28,090	11,824	6,087	38,617
	9	884,557	603,281	-	-	-	-	-	-	-	-	184,322	71,781	34,612	-	-	110,270	45,723	35,745	8,723	16,996	59,302
	10	781,365	555,408	-	-	-	-	-	-	-	-	235,510	88,606	45,050	-	-	159,370	170,926	29,663	10,534	2,702	▲ 13,319
	11	967,372	630,536	-	-	-	-	-	-	-	-	307,514	116,387	62,196	-	-	147,342	108,677	25,436	13,725	7,046	39,402
	12	977,609	667,869	-	-	-	-	-	-	-	-	211,240	131,826	76,923	-	-	76,463	15,661	12,354	22,293	22,379	81,096
24年	1月	947,987	655,177	-	-	-	-	-	-	-	-	195,244	109,359	60,972	-	-	91,248	44,093	19,855	22,668	5,352	51,058
	2	992,472	660,581	-	-	-	-	-	-	-	-	231,000	173,150	92,311	-	-	56,941	20,262	17,742	20,143	2,920	55,043
	3	876,775	570,343	-	-	-	-	-	-	-	-	206,647	125,518	61,968	-	-	79,198	26,411	22,620	18,633	2,367	47,536
	4	968,504	616,424	-	-	-	-	-	-	-	-	218,747	141,924	75,536	-	-	75,318	25,779	25,205	20,562	2,550	34,594
	5	989,224	667,239	-	-	-	-	-	-	-	-	231,826	147,921	71,407	-	-	83,563	26,570	31,499	10,384	2,429	41,677
	6	906,059	598,955	-	-	-	-	-	-	-	-	227,760	105,482	78,659	-	-	125,663	44,000	36,071	20,014	10,378	28,501
	7	915,839	625,938	-	-	-	-	-	-	-	-	236,278	130,627	41,348	-	-	98,238	44,255	35,328	18,596	1,492	18,494
	8	946,256	636,491	-	-	-	-	-	-	-	-	261,729	167,482	115,521	-	-	87,662	21,327	27,269	14,241	30,824	24,248
	9	946,291	603,002	-	-	-	-	-	-	-	-	245,752	162,831	79,195	-	-	85,838	22,657	29,268	19,634	23,338	36,698
	10	804,568	571,696	-	-	-	-	-	-	-	-	189,642	142,177	64,012	-	-	68,558	13,966	27,312	18,734	28,373	81,230
	11	807,803	588,188	-	-	-	-	-	-	-	-	182,192	134,395	66,894	-	-	40,569	▲ 8,662	36,619	11,773	17,312	43,889
	12	955,183	706,132	-	-	-	-	-	-	-	-	204,116	94,378	53,583	-	-	103,951	25,406	41,272	14,486	10,039	27,923
25年	1月	1,006,984	678,942	-	-	-	-	-	-	-	-	234,627	164,882	60,259	-	-	79,825	12,810	22,739	10,762	41,310	38,762
	2	955,730	648,363	-	-	-	-	-	-	-	-	226,759	131,967	72,191	-	-	104,760	21,398	48,832	19,740	16,622	32,165
	3	1,039,455	692,541	-	-	-	-	-	-	-	-	238,425	141,334	64,724	-	-	103,310	19,347	46,716	23,068	6,855	53,996
	4	935,582	593,721	-	-	-	-	-	-	-	-	217,705	134,966	58,684	-	-	81,468	25,083	35,295	15,261	1,820	64,150
	5	1,013,191	681,981	-	-	-	-	-	-	-	-	252,747	179,324	85,191	-	-	65,966	17,421	24,894	14,738	5,755	33,482
	6	1,121,372	742,303	-	-	-	-	-	-	-	-	288,723	229,051	90,446	-	-	93,957	11,724	40,833	20,418	15,659	40,292
	7	1,119,708	697,052	-	-	-	-	-	-	-	-	265,595	189,966	108,389	-	-	81,418	18,371	45,413	6,407	9,220	92,521
	8	1,079,349	648,558	-	-	-	-	-	-	-	-	267,419	153,486	87,042	-	-	104,773	22,900	53,963	19,988	7,097	115,182
	9	1,161,105	749,752	-	-	-	-	-	-	-	-	298,640	197,594	115,821	-	-	110,203	28,378	60,123	18,842	2,418	38,562
	10	1,521,088	1,312,334	-	-	-	-	-	-	-	-	288,463	187,008	85,288	-	-	126,261	29,260	81,423	25,512	4,087	41,908
	11	1,288,427	967,632	-	-	-	-	-	-	-	-	288,022	185,109	85,440	-	-	87,101	34,784	40,679	20,509	3,468	60,955
	12	1,003,680	623,304	-	-	-	-	-	-	-	-	277,953	174,224	89,607	-	-	97,658	24,065	45,867	13,660	2,278	77,110
26年	1月	1,048,079	644,672	-	-	-	-	-	-	-	-	297,375	167,696	102,180	-	-	127,869	31,567	70,076	21,247	2,871	40,798
	2	1,103,332	688,151	-	-	-	-	-	-	-	-	257,491	180,697	89,727	-	-	81,494	30,431	45,529	11,550	783	84,498
	3	1,162,517	562,453	-	-	-	-	-	-	-	-	331,218	186,316	91,506	-	-	158,075	92,294	29,555	16,544	3,671	186,695
	4	856,511	434,235	-	-	-	-	-	-	-	-	310,447	186,434	86,519	-	-	123,174	87,666	29,916	23,645	3,900	30,589
	5	2,074,056	913,734	-	-	-	-	-	-	-	-	1,292,664	1,023,170	150,340	-	-	170,653	39,174	54,330	23,381	12,183	33,869
	6	1,290,801	706,409	-	-	-	-	-	-	-	-	448,764	339,901	215,449	-	-	168,738	32,389	81,746	21,676	11,982	81,919
	7	1,197,835	700,718	-	-	-	-	-	-	-	-	418,201	275,462	92,838	-	-	138,031	63,988	50,381	20,062	6,143	31,510
	8	1,345,257	800,647	-	-	-	-	-	-	-	-	399,731	238,044	107,121	-	-	150,368	60,186	65,909	8,980	7,837	106,974
	9	1,253,652	623,769	-	-	-	-	-	-	-	-	341,789	237,220	83,562	-	-	116,502	50,538	31,879	35,021	8,093	185,935

(単位:%)

昭和60年	4月	-	-	-	-	-	-	-	-	-	-	-	-	-	-	-	-	-	-	-	-	-
	5	▲ 14.6	▲ 25.4	-	-	-	-	-	-	-	-	▲ 0.9	▲ 2.1	▲ 156.1	-	-	▲ 4.2	▲ 15.4	1.4	28.7	▲ 11.4	▲ 11.7
	6	▲ 7.0	▲ 18.9	-	-	-	-	-	-	-	4.6	▲ 5.8	▲ 34.4	-	-	10.9	▲ 18.5	18.7	47.8	32.1	▲ 19.8	
	7	0.8	▲ 5.9	-	-	-	-	-	-	-	0.5	11.0	▲ 4.3	-	-	▲ 8.8	▲ 9.9	▲ 7.4	▲ 3.2	▲ 16		

	9	5.8	0.7	-	-	-	-	-	-	-	-	-	21.6	41.6	66.4	-	-	▲3.3	▲4.9	5.8	4.8	1.5	▲16.2	
	10	▲4.6	▲4.5	-	-	-	-	-	-	-	-	-	▲9.6	▲23.1	▲28.5	-	-	▲12.1	▲2.3	▲7.9	105.8	77.7	▲38.8	
	11	▲7.3	0.3	-	-	-	-	-	-	-	-	-	▲11.4	4.6	1.0	-	-	▲21.1	▲14.7	▲12.1	▲42.5	▲41.1	▲70.7	
	12	12.0	1.4	-	-	-	-	-	-	-	-	-	2.6	▲22.9	▲21.9	-	-	28.4	9.6	5.7	27.9	210.3	▲812.9	
11年	1月	▲15.3	▲6.4	-	-	-	-	-	-	-	-	-	▲2.0	6.3	▲19.3	-	-	▲13.1	▲6.2	24.8	▲31.6	▲86.9	▲66.3	
	2	15.1	5.5	-	-	-	-	-	-	-	-	-	18.4	20.2	54.1	-	-	23.6	1.2	10.5	177.1	243.3	▲18.4	
	3	2.2	10.5	-	-	-	-	-	-	-	-	-	0.5	4.5	▲2.1	-	-	▲4.9	▲1.3	4.9	▲38.9	▲3.1	▲290.2	
	4	▲11.9	▲23.1	-	-	-	-	-	-	-	-	-	▲5.3	35.4	5.7	-	-	▲6.1	5.3	▲27.6	3.3	▲5.6	▲162.8	
	5月	▲1.7	10.2	-	-	-	-	-	-	-	-	-	▲6.1	▲42.1	▲21.2	-	-	0.3	5.8	▲4.2	▲0.3	▲29.1	▲5.6	
	6	▲1.9	2.3	-	-	-	-	-	-	-	-	-	▲17.3	2.8	29.9	-	-	▲22.7	▲18.4	▲13.6	▲44.1	91.8	▲13.2	
	7	▲3.1	▲5.3	-	-	-	-	-	-	-	-	-	5.0	3.9	▲27.1	-	-	7.9	▲3.2	12.2	41.8	▲39.8	▲27.1	
	8	8.1	7.1	-	-	-	-	-	-	-	-	-	3.7	▲0.8	22.8	-	-	1.2	24.4	▲7.9	▲22.5	▲1.5	25.2	
	9	7.9	8.3	-	-	-	-	-	-	-	-	-	11.6	11.3	9.0	-	-	7.5	▲9.9	29.0	45.2	▲35.5	▲33.5	
	10	▲14.3	▲6.9	-	-	-	-	-	-	-	-	-	▲29.9	▲32.4	▲25.0	-	-	▲24.3	▲6.7	▲42.2	▲49.0	78.3	77.7	
	11	11.5	5.0	-	-	-	-	-	-	-	-	-	18.4	43.2	29.4	-	-	▲1.5	▲4.3	18.3	25.6	▲32.0	46.5	
	12	▲3.6	7.2	-	-	-	-	-	-	-	-	-	▲21.1	▲25.3	▲42.2	-	-	▲12.7	▲2.3	▲4.2	▲30.3	▲9.3	▲38.0	
12年	1月	17.7	19.4	-	-	-	-	-	-	-	-	-	39.4	31.9	44.0	-	-	28.4	24.6	1.6	46.1	▲24.8	1.5	
	2	▲4.0	▲17.6	▲14.3	▲19.1	60.4	▲2.8	▲21.8	▲1.5	▲54.8	▲30.7	3.7	▲23.9	5.4	9.3	▲5.2	▲0.5	276.5	6.5	▲6.9	4.0	▲62.7	528.2	59.8
	3	4.8	16.6	7.2	12.4	5.1	13.8	3.7	▲4.6	▲3.9	20.2	3.1	37.5	▲5.8	▲15.1	9.6	▲14.1	▲64.6	7.4	0.8	14.5	407.5	▲69.4	▲68.1
	4	▲14.8	▲18.9	▲8.7	▲12.7	▲51.1	▲2.0	▲36.9	▲24.3	56.0	▲23.8	▲11.1	▲32.3	▲26.7	▲6.6	▲22.8	7.7	▲4.9	▲16.5	▲5.9	73.5	4.4	112.4	
	5	10.0	1.7	39.4	▲10.6	14.0	▲22.1	7.6	▲4.3	▲31.6	▲5.7	12.0	▲16.8	67.3	▲4.4	56.8	▲23.8	4.6	65.0	▲8.6	74.5	324.3	8.0	20.9
	6	▲2.6	▲3.3	▲22.6	5.8	53.9	▲23.7	▲39.1	26.5	41.1	4.3	9.8	7.6	▲24.6	45.5	▲27.5	80.8	273.7	▲43.8	2.3	▲46.2	▲67.9	▲10.1	116.6
	7	▲19.4	▲14.8	▲3.4	▲18.4	▲64.0	53.3	6.2	▲30.3	▲35.1	▲16.9	▲30.5	▲8.4	▲8.6	▲30.6	13.0	▲54.4	▲60.2	14.9	9.9	▲12.0	37.0	67.5	▲84.3
	8	10.6	13.2	10.7	15.8	60.1	▲29.2	▲10.1	36.4	36.6	4.0	38.9	10.6	3.2	▲8.6	▲20.9	▲12.8	55.1	▲5.0	▲31.2	1.7	63.0	▲41.7	133.8
	9	2.7	1.8	▲9.7	2.4	▲2.7	4.1	64.4	▲25.9	▲5.0	40.3	▲16.8	▲13.2	3.1	11.1	8.4	10.9	▲4.7	▲5.5	40.1	▲7.6	▲15.7	▲7.5	21.2
	10	▲2.5	▲8.4	15.7	▲13.6	▲45.2	5.6	▲44.5	▲10.6	▲10.3	▲11.8	▲9.6	▲25.1	14.1	17.9	▲13.0	75.3	34.5	12.5	1.5	23.0	▲33.1	29.5	▲38.5
	11	5.8	7.6	3.9	9.0	204.4	1.4	13.1	3.1	▲2.5	▲8.3	34.8	26.0	▲0.7	▲12.9	25.0	▲20.7	▲56.0	6.7	50.9	▲2.0	54.3	▲38.9	90.9
	12	▲4.2	▲3.6	▲3.0	▲2.8	▲48.8	18.3	71.4	▲14.9	20.1	▲12.8	▲8.6	▲6.6	▲11.0	10.2	19.4	▲9.5	6.8	19.3	▲38.6	▲6.4	▲19.0	17.8	1.3
13年	1月	4.9	▲1.2	▲4.0	▲3.3	▲3.6	▲37.5	▲4.9	▲6.6	▲29.4	24.1	▲11.5	▲11.8	11.0	6.2	10.6	▲11.6	▲26.5	18.1	15.1	▲2.7	6.7	72.8	102.7
	2	5.8	6.9	1.7	8.0	▲25.1	61.8	47.9	▲2.6	0.6	▲8.9	7.8	26.2	▲21.1	▲17.0	▲35.6	2.5	53.8	▲21.2	▲18.0	2.6	▲25.9	▲41.8	▲56.1
	3	2.4	3.5	▲4.1	▲2.7	▲40.1	▲7.7	▲35.2	26.7	36.8	2.2	0.9	1.3	12.1	20.3	5.7	2.8	56.3	▲3.3	▲29.8	▲12.0	14.6	▲16.2	▲23.0
	4	▲12.0	▲18.9	0.4	▲8.4	61.2	▲0.5	▲53.1	▲10.6	29.7	12.2	▲21.7	▲14.4	2.2	▲24.6	▲1.5	▲23.4	▲62.2	71.3	120.4	3.2	7.6	112.7	▲10.0
	5	2.9	6.7	▲6.8	6.9	▲25.3	▲5.5	240.5	▲45.8	13.3	▲9.2	11.5	5.3	0.8	45.1	3.0	208.7	95.0	▲40.9	▲54.1	9.6	▲30.6	▲29.4	18.4
	6	4.7	2.5	6.5	▲0.8	▲11.6	35.8	▲55.2	76.4	▲23.1	▲8.8	0.2	▲3.1	3.0	▲14.4	11.3	▲55.3	▲11.1	33.5	41.8	▲12.5	383.7	12.3	21.4
	7	5.1	13.6	▲10.1	21.1	61.2	▲28.8	4.6	11.7	402.6	35.6	▲5.1	50.0	▲10.3	▲14.0	▲4.5	▲0.2	▲36.8	▲10.3	0.4	27.9	▲73.7	▲33.4	▲38.0
	8	1.4	▲6.9	▲8.0	▲7.4	▲14.9	42.8	▲5.9	0.7	▲73.9	▲6.0	10.7	▲36.1	15.6	66.2	41.6	58.5	73.2	▲11.4	▲3.7	▲19.3	▲4.4	▲7.1	41.6
	9	▲10.5	▲6.1	▲13.2	▲7.0	15.3	▲20.2	8.2	18.2	▲18.3	▲14.9	9.5	7.4	▲17.2	▲36.2	▲48.8	▲45.0	26.5	▲7.1	▲29.7	0.7	▲31.9	64.5	▲29.4
	10	2.0	4.5	2.7	9.2	▲71.9	29.9	▲18.0	69.4	▲8.2	9.3	▲14.4	9.0	5.2	9.2	37.8	▲4.7	1.0	▲18.0	2.0	▲27.7	▲1.0	▲38.1	28.3
	11	1.3	▲6.0	▲15.4	▲4.7	286.0	▲12.2	72.5	▲44.3	16.3	3.3	▲7.4	37.0	▲2.7	▲21.9	▲10.7	▲19.2	▲30.0	15.9	86.6	11.5	26.2	▲17.2	152.0
	12	▲0.9	0.9	2.0	▲4.6	▲51.2	3.3	▲51.9	▲26.0	11.4	10.8	9.3	▲54.6	12.9	32.0	25.4	9.8	2.1	10.1	▲35.2	11.3	126.1	16.7	▲50.4
14年	1月	▲4.3	0.9	▲13.1	3.8	▲66.2	▲18.1	▲2.8	18.7	▲5.7	▲16.9	33.7	24.1	4.3	2.0	▲24.8	9.3	192.1	▲3.6	7.7	▲8.1	▲20.4	13.4	▲27.6
	2	4.6	▲1.9	1.7	▲6.8	229.9	▲22.6	▲2.8	▲5.2	8.6	5.5	▲13.8	▲8.0	3.1	11.1	19.7	▲40.1	▲21.9	▲8.4	▲16.9	9.9	▲24.7	3.8	4.5
	3	▲4.6	▲3.0	11.7	▲11.8	24.3	2.7	20.3	▲12.7	▲16.6	▲9.6	▲13.4	▲7.2	▲12.0	▲19.4	▲4.2	51.6	▲58.0	3.8	3.4	▲12.0	4.6	▲25.1	127.3
	4	▲12.5	▲10.9	▲8.7	16.4	104.0	8.8	▲7.1	14.0	▲41.2	2.7	14.2	15.5	1.9	22.6	27.7	▲18.1	128.4	▲14.4	12.8	▲4.2	▲31.9	▲49.5	▲55.4
	5	17.1	8.2	▲4.4	2.8	▲54.3	6.1	▲23.1	12.1	17.7	23.3	▲11.7	57.1	38.3	1.6	▲5.5	5.5	105.6	59.8	11.4	72.5	31.5	170.3	47.4
	6	▲17.7	▲6.4	▲6.2	▲7.4	44.9	▲19.4	66.5	▲25.7	▲0.4	▲6.5	4.3	▲41.5	▲47.4	▲45.3	▲35.0	▲19.2	▲86.6	▲41.4	▲10.8	▲40.7	▲36.4	▲53.5	▲18.9
	7	24.4	9.9	56.8	2.6	88.7	11.1	13.1	50.2	3.8	▲14.2	19.3	4.7	56.3	104.3	117.0	233.4	111.9	5.7	▲10.7	7.6	35.1	▲38.0	50.3
	8	▲8.3	▲1.6	▲22.7	▲2.8	▲53.8	▲6.6	▲0.1	▲27.3	▲11.0	3.1	▲10.4	▲5.1	▲13.9	▲32.2	▲41.1	▲47.5	▲48.5	24.0	▲6.8	17.3	37.4	128.2	▲41.2
	9	1.1	▲0.2	13.8	▲2.9	5.4	1.2	▲16.6	21.0	30.1	▲1.6	▲8.6	11.1	3.9	▲3.4	3.1	▲16.6	▲21.6	3.4	36.0	▲11.5	▲6.2	99.8	48.3
	10	11.6	14.4	▲12.5	29.0	55.4	10.4	▲22.5	▲8.9	28.9	68.9	13.7	1.1	0.1	1.2	20.1	▲18.7	▲3.7	▲1.2	▲5.9	9.2	11.3	▲67.2	▲1.1
	11	▲12.6	▲13.3	4.7	▲20.8	▲92.3	▲19.3	▲2.3	12.8	▲48.8	▲33.8	▲6.3	▲10.6	4.9	▲2.5	▲8.2	▲12.5	145.1	8.5	▲20.1	▲9.3	68.4	309.9	▲40.7
	12	▲3.2	▲7.7	▲5.1	▲5.5	783.3	▲8.7	▲39.7	2.6	▲6.5	▲14.0	▲0.5	19.8	1.0	22.9	▲8.1	69.3	▲7.9	▲11.9	56.8	▲2.9	▲57.2	▲47.1	▲43.7
15年	1月	▲2.4	7.8	19.1	▲0.1	97.4	25.9	46.7	0.6	46.9	▲8.8	0.6	▲8.0	▲15.5	▲20.2	11.5	▲49.6	▲25.8	▲15.4	▲50.0	2.2	56.5	▲21.4	123.7
	2	5.5	3.9	▲2.3	▲1.8	▲39.7	6.2	13.6	▲7.8	▲25.4	12.4	▲13.8	▲18.8	2.3	▲0.4	▲6.4	66.3	▲50.2	13.8	55.9	▲20.1	7.9	▲20.2	▲23.7
	3	▲1.4	▲1.1	▲10.6	▲6.4	13.9	▲1.0	▲22.6	▲29.7	36.1	▲13.5	13.8	13.4	6.7	0.6	▲13.2	▲28.6	101.9	▲16.9	▲5.6	▲18.5	▲42.8	▲2.0	▲12.7
	4	3.3	▲1.7	-	-	-	-	-	-	-	-	-	-	29.4	6.2	5.8	-	-	58.2	▲18.3	184.2	82.7	▲50.4	127.3
	5	2.4	15.6	-	-	-	-	-	-	-	-	-	-	▲27.0	▲11.8	▲9.5	-	-	▲43.1	▲19.6	▲57.0	▲25.0	5.0	▲32.8
	6	▲7.1	▲10.5	-	-	-	-	-	-	-	-	-	-	8.2	▲2.9	▲3.1	-	-	29.2	35.0	42.7	▲3.9	100.1	▲45.4
	7	2.7	▲2.2	-	-	-	-	-	-	-	-	-	-	5.1	0.3	▲20.5	-	-	▲6.9	4.6	▲13.6	▲38.8	▲0.1	78.6
	8	0.1	2.3	-	-	-	-	-	-	-	-	-	-	4.4	14.5	54.3	-	-	▲1.7					

17年	12	▲ 3.6	▲ 1.3	-	-	-	-	-	-	-	-	-	▲ 20.8	▲ 32.1	▲ 35.6	-	-	▲ 9.5	7.2	▲ 12.7	8.7	▲ 56.0	▲ 10.5
	1月	10.5	8.3	-	-	-	-	-	-	-	-	-	12.1	2.7	▲ 32.9	-	-	15.5	10.3	▲ 6.2	160.9	▲ 27.0	212.7
	2	▲ 28.2	▲ 32.7	-	-	-	-	-	-	-	-	-	▲ 12.4	▲ 3.4	9.5	-	-	▲ 11.5	17.1	1.3	▲ 51.5	▲ 57.7	▲ 51.4
	3	53.8	34.3	-	-	-	-	-	-	-	-	-	93.0	124.6	186.3	-	-	12.7	▲ 6.6	20.9	▲ 25.2	166.0	110.5
	4	▲ 10.9	15.2	-	-	-	-	-	-	-	-	-	▲ 41.9	▲ 45.3	▲ 51.7	-	-	▲ 20.6	▲ 16.8	▲ 24.4	▲ 4.7	1.2	▲ 58.8
	5	▲ 7.3	▲ 15.1	-	-	-	-	-	-	-	-	-	11.9	22.2	13.2	-	-	21.4	13.1	21.3	9.0	▲ 93.8	13.7
	6	▲ 0.8	7.3	-	-	-	-	-	-	-	-	-	▲ 22.4	▲ 24.7	▲ 62.6	-	-	▲ 28.2	▲ 15.1	▲ 24.0	36.8	335.7	▲ 12.2
	7	27.6	3.0	-	-	-	-	-	-	-	-	-	44.6	33.8	102.5	-	-	65.6	10.5	31.3	67.0	253.6	328.9
	8	▲ 18.7	▲ 0.5	-	-	-	-	-	-	-	-	-	▲ 19.4	▲ 23.3	▲ 21.5	-	-	▲ 14.9	8.3	▲ 4.2	▲ 47.7	3.2	▲ 89.2
	9	1.0	▲ 1.4	-	-	-	-	-	-	-	-	-	16.9	22.1	80.8	-	-	10.0	▲ 4.4	6.2	49.9	▲ 39.9	95.6
	10	▲ 0.8	▲ 2.7	-	-	-	-	-	-	-	-	-	▲ 6.0	▲ 25.4	▲ 34.6	-	-	11.6	63.2	▲ 10.1	3.2	▲ 27.1	52.7
	11	▲ 5.4	▲ 2.4	-	-	-	-	-	-	-	-	-	▲ 26.0	▲ 13.4	▲ 28.6	-	-	▲ 32.3	▲ 43.4	▲ 20.8	▲ 48.1	96.5	25.6
12	15.6	13.8	-	-	-	-	-	-	-	-	-	16.2	13.7	3.2	-	-	20.0	35.3	4.0	69.2	▲ 9.5	4.4	
18年	1月	▲ 24.3	▲ 18.0	-	-	-	-	-	-	-	-	▲ 31.8	▲ 29.3	▲ 2.5	-	-	▲ 40.3	▲ 37.5	▲ 28.2	▲ 14.8	▲ 68.3	▲ 33.5	
	2	13.1	10.0	-	-	-	-	-	-	-	-	11.0	▲ 8.5	4.0	-	-	56.1	▲ 9.7	19.8	70.6	475.9	41.0	
	3	7.5	2.2	-	-	-	-	-	-	-	-	17.2	46.7	6.2	-	-	▲ 16.6	87.0	▲ 11.3	▲ 62.0	3.2	▲ 7.2	
	4	3.5	5.5	-	-	-	-	-	-	-	-	24.6	30.9	165.5	-	-	9.1	▲ 25.0	43.3	▲ 4.2	▲ 40.7	▲ 18.6	
	5	▲ 5.5	▲ 4.6	-	-	-	-	-	-	-	-	▲ 41.9	▲ 50.3	▲ 70.2	-	-	▲ 20.0	▲ 33.3	▲ 11.7	1.9	▲ 3.9	▲ 12.0	
	6	▲ 1.6	▲ 2.8	-	-	-	-	-	-	-	-	31.9	72.2	112.2	-	-	▲ 12.7	▲ 7.2	▲ 16.7	1.0	196.3	54.3	
	7	2.4	▲ 0.3	-	-	-	-	-	-	-	-	▲ 21.2	▲ 46.8	▲ 46.3	-	-	24.0	12.8	▲ 3.8	48.0	▲ 44.1	51.2	
	8	12.8	13.5	-	-	-	-	-	-	-	-	35.8	73.0	44.0	-	-	15.8	2.2	29.9	▲ 9.1	73.2	▲ 14.7	
	9	▲ 1.0	▲ 13.6	-	-	-	-	-	-	-	-	▲ 0.4	2.4	12.6	-	-	▲ 5.5	24.8	▲ 21.8	27.2	▲ 42.2	280.7	
	10	▲ 3.2	26.6	-	-	-	-	-	-	-	-	▲ 9.1	▲ 13.0	▲ 47.4	-	-	▲ 12.0	0.3	▲ 49.3	3.7	41.5	▲ 82.2	
	11	▲ 4.2	▲ 11.3	-	-	-	-	-	-	-	-	13.1	9.1	83.8	-	-	27.6	16.5	98.2	3.3	▲ 81.0	11.8	
	12	▲ 3.1	▲ 3.0	-	-	-	-	-	-	-	-	▲ 20.3	▲ 13.6	▲ 42.6	-	-	▲ 26.4	▲ 39.0	▲ 8.0	▲ 51.8	267.2	▲ 32.8	
19年	1月	10.9	16.1	-	-	-	-	-	-	-	13.8	15.4	25.3	-	-	▲ 0.3	▲ 7.6	4.6	230.5	▲ 37.6	7.0		
	2	▲ 9.8	▲ 16.4	-	-	-	-	-	-	-	17.4	29.1	▲ 5.3	-	-	▲ 9.1	▲ 13.3	32.2	76.4	115.6	4.8		
	3	2.6	0.1	-	-	-	-	-	-	-	▲ 21.4	▲ 22.7	17.8	-	-	▲ 11.3	▲ 78.9	▲ 38.3	96.7	▲ 45.3	39.7		
	4	4.6	9.0	-	-	-	-	-	-	-	21.6	44.9	14.6	-	-	▲ 22.6	414.5	▲ 24.3	▲ 47.5	17.5	▲ 24.2		
	5	36.5	23.6	-	-	-	-	-	-	-	3.7	26.1	▲ 9.0	-	-	8.2	22.2	8.6	▲ 20.4	▲ 53.1	154.6		
	6	▲ 15.4	1.6	-	-	-	-	-	-	-	▲ 15.8	▲ 38.4	16.0	-	-	29.0	▲ 12.8	28.2	361.4	▲ 16.9	▲ 53.1		
	7	▲ 29.1	▲ 35.4	-	-	-	-	-	-	-	▲ 18.7	▲ 8.4	▲ 1.0	-	-	▲ 43.9	▲ 27.6	▲ 55.8	▲ 66.1	▲ 14.2	▲ 17.5		
	8	11.5	9.0	-	-	-	-	-	-	-	13.0	▲ 9.8	▲ 14.0	-	-	102.9	333.9	3.3	▲ 35.6	▲ 23.0	28.3		
	9	▲ 2.9	6.0	-	-	-	-	-	-	-	▲ 19.4	▲ 1.2	▲ 23.3	-	-	▲ 43.0	▲ 83.0	70.2	▲ 18.5	▲ 49.2	18.6		
	10	▲ 12.4	▲ 8.5	-	-	-	-	-	-	-	▲ 13.6	▲ 21.7	▲ 35.1	-	-	▲ 7.2	▲ 84.1	2.5	29.8	▲ 74.3	▲ 17.9		
	11	15.9	13.0	-	-	-	-	-	-	-	45.3	66.5	122.1	-	-	0.8	433.0	▲ 14.8	▲ 10.0	337.6	▲ 17.8		
	12	8.8	▲ 4.3	-	-	-	-	-	-	-	23.5	34.3	17.9	-	-	45.7	▲ 28.5	34.7	82.0	88.1	51.7		
20年	1月	3.4	4.3	-	-	-	-	-	-	19.6	1.4	9.4	-	-	17.3	565.4	▲ 0.5	▲ 47.3	66.4	▲ 8.8			
	2	6.2	0.4	-	-	-	-	-	-	21.2	18.0	22.6	-	-	▲ 3.7	▲ 44.0	25.3	75.0	19.9	▲ 4.8			
	3	▲ 4.8	▲ 2.3	-	-	-	-	-	-	▲ 43.6	▲ 41.2	▲ 48.2	-	-	▲ 40.9	▲ 96.6	▲ 39.3	▲ 18.9	▲ 67.6	89.7			
	4	▲ 9.4	▲ 7.0	-	-	-	-	-	-	12.6	▲ 7.6	▲ 24.0	-	-	103.9	2527.8	11.4	62.6	861.2	▲ 41.9			
	5	12.3	11.2	-	-	-	-	-	-	0.2	26.1	52.4	-	-	▲ 12.2	▲ 43.0	60.4	68.8	▲ 99.3	▲ 14.9			
	6	▲ 4.3	▲ 5.0	-	-	-	-	-	-	33.5	25.3	▲ 13.0	-	-	17.7	435.4	▲ 19.5	▲ 38.4	1805.2	31.8			
	7	18.0	21.4	-	-	-	-	-	-	18.1	29.6	158.3	-	-	▲ 14.3	▲ 68.0	4.3	▲ 41.4	120.9	▲ 27.1			
	8	▲ 20.2	▲ 22.1	-	-	-	-	-	-	▲ 32.9	▲ 27.8	▲ 55.1	-	-	▲ 22.8	▲ 11.0	▲ 8.4	23.8	▲ 37.2	8.9			
	9	3.0	10.4	-	-	-	-	-	-	▲ 35.1	▲ 46.4	▲ 17.2	-	-	▲ 5.8	▲ 13.2	▲ 23.9	17.5	▲ 38.0	176.0			
	10	18.5	▲ 7.0	-	-	-	-	-	-	210.9	291.5	121.3	-	-	55.3	32.7	60.5	89.2	▲ 37.1	▲ 23.5			
	11	▲ 29.2	▲ 2.8	-	-	-	-	-	-	▲ 55.7	▲ 64.0	▲ 41.4	-	-	▲ 19.8	30.8	▲ 12.7	▲ 91.6	37.6	▲ 83.5			
	12	▲ 15.5	▲ 24.8	-	-	-	-	-	-	22.5	▲ 2.8	0.3	-	-	74.6	3.5	27.0	1877.9	▲ 9.3	▲ 294.5			
21年	1月	▲ 6.9	▲ 8.0	-	-	-	-	-	-	▲ 18.2	6.2	12.9	-	-	▲ 52.8	▲ 17.5	▲ 21.3	▲ 73.7	83.5	▲ 139.9			
	2	25.1	20.9	-	-	-	-	-	-	19.4	10.6	15.0	-	-	9.8	▲ 27.9	▲ 24.5	▲ 18.0	309.1	107.4			
	3	▲ 21.9	▲ 42.9	-	-	-	-	-	-	13.8	8.0	▲ 3.9	-	-	52.5	160.4	101.2	113.3	▲ 66.7	▲ 213.4			
	4	12.1	55.0	-	-	-	-	-	-	▲ 15.5	▲ 8.5	▲ 12.2	-	-	▲ 23.9	▲ 41.2	▲ 42.9	▲ 17.8	▲ 19.1	▲ 165.5			
	5	▲ 12.5	▲ 19.7	-	-	-	-	-	-	▲ 10.3	5.1	4.7	-	-	▲ 6.1	▲ 12.6	11.7	▲ 44.0	▲ 57.9	▲ 16.3			
	6	18.6	20.2	-	-	-	-	-	-	1.3	▲ 7.5	▲ 13.8	-	-	▲ 8.3	▲ 24.5	26.3	24.4	106.6	283.9			
	7	▲ 7.5	▲ 4.6	-	-	-	-	-	-	23.5	▲ 6.6	▲ 0.9	-	-	72.3	92.4	12.0	33.0	▲ 26.6	▲ 67.0			
	8	5.1	7.3	-	-	-	-	-	-	▲ 27.1	▲ 7.5	15.4	-	-	▲ 36.9	▲ 39.3	▲ 23.8	▲ 14.0	54.8	55.9			
	9	21.4	36.2	-	-	-	-	-	-	19.0	31.7	▲ 1.7	-	-	13.2	76.6	▲ 5.3	15.1	▲ 27.9	▲ 65.4			
	10	▲ 18.5	▲ 29.0	-	-	-	-	-	-	28.9	11.2	▲ 5.0	-	-	11.0	▲ 9.0	38.2	▲ 7.1	23.0	175.0			
	11	▲ 0.2	2.6	-	-	-	-	-	-	▲ 14.6	▲ 18.2	▲ 35.0	-	-	5.9	▲ 25.4	▲ 8.0	▲ 10.1	▲ 50.9	▲ 8.4			
	12	▲ 2.9	▲ 2.3	-	-	-	-	-	-	▲ 26.8	▲ 26.3	7.2	-	-	▲ 17.6	▲ 10.4	▲ 24.5	▲ 23.3	318.4	▲ 7.2			
22年	1月	10.1	8.3	-	-	-	-	-	-	24.1	24.6	▲ 28.3	-	-	13.5	32.9	76.2	37.3	▲ 71.0	27.5			
	2	▲ 15.5	▲ 14.3	-	-	-	-	-	-	▲ 6.7	▲ 11.0	59.7	-	-	▲ 10.1	▲ 22.7	▲ 25.0	▲ 0.8	71.6	▲ 91.0			
	3	41.3	26.2	-	-	-	-	-	-	15.2	14.3	8.5	-	-	19.7	29.9	18.5	3.5	143.1	2035.0			
	4	▲ 40.3	▲ 37.9	-	-	-	-	-	-	▲ 25.6	▲ 33.6	▲ 26.7	-	-	▲ 8.0	▲ 20.6	20.5	7.9	▲ 53.0	▲ 62.0			
	5	23.9	27.0	-	-	-	-	-	-	▲ 6.0	▲ 25.5	▲ 16.5	-	-	16.9	60.8	▲ 44.4	▲ 42.6	59.4	29.8			
	6	0.3	7.4	-	-	-	-	-	-	16.9	48.0	21.8	-	-	▲ 14.8	▲ 22.7	16.5	35.8	152.6	▲ 36.7			
	7	3.7	2.7	-	-	-	-	-	-	▲ 10.4	0.3	2.8	-	-	▲ 20.7	▲ 36.4	▲ 28.4	40.7	▲ 76.2	95.4			
	8	0.2	1.8	-	-	-	-	-	-	12.2	19.2	▲ 2.3	-	-	11.6	▲ 7.3	1.2	73.0	▲ 54.7	▲ 60.8			
	9	4.9	7.5	-	-	-	-	-	-	8.3	15.2	39.4	-	-	21.3	▲ 13.1	148.1	▲ 70.6	402.7	112.3			
	10	▲ 9.2	▲ 4.0	-	-	-	-	-	-	▲ 24.5	▲ 25.3	▲ 46.5	-	-	▲ 51.0	68.2	▲ 71.5	▲ 28.6	▲ 44.5	5.1			
	11	1.3	▲ 7.1	-	-	-	-	-	-	68.0	23.5	136.1	-	-	218.2	118.3	99.7	146.2	227.1	▲ 90.0			
	12	14.8	7.0	-	-	-	-	-	-	▲ 17.3	19.4	▲ 27.4	-	-	▲ 47.8	▲ 52.7	▲ 21.0	▲ 52.6	▲ 68.1	1142.7			
23年	1月	▲ 13.7	▲ 10.9	-	-	-	-	-	-	▲ 15.3	▲ 33.2	▲ 24.5	-	-	19.3	▲ 8.8	▲ 21.9	65.9	359.5	▲ 33.1			
	2	15.2	18.3	-	-	-	-	-	-	6.9													

3	4.8	3.3	-	-	-	-	-	-	-	-	-	-	-	-	-	-	-	-	▲ 12.0	▲ 17.4	▲ 18.8	-	-	-	▲ 3.8	▲ 54.8	21.1	▲ 33.4	228.6	▲ 58.8
4	▲ 9.4	▲ 14.4	-	-	-	-	-	-	-	-	-	-	-	-	-	-	-	-	30.3	30.1	69.3	-	-	-	40.8	85.1	71.1	78.8	31.9	165.0
5	10.9	8.0	-	-	-	-	-	-	-	-	-	-	-	-	-	-	-	-	1.2	53.7	▲ 34.2	-	-	-	▲ 42.6	▲ 32.5	▲ 51.5	3.6	▲ 78.7	20.8
6	▲ 10.5	3.4	-	-	-	-	-	-	-	-	-	-	-	-	-	-	-	-	▲ 21.1	▲ 45.4	5.1	-	-	-	15.0	39.7	▲ 16.9	▲ 3.2	▲ 384.2	▲ 52.1
7	2.6	3.5	-	-	-	-	-	-	-	-	-	-	-	-	-	-	-	-	3.0	3.6	8.2	-	-	-	3.6	8.3	26.1	▲ 33.6	▲ 31.2	12.5
8	0.8	▲ 7.1	-	-	-	-	-	-	-	-	-	-	-	-	-	-	-	-	10.6	▲ 30.2	▲ 29.3	-	-	-	78.6	178.2	27.3	▲ 26.2	179.2	53.6
9	▲ 11.7	▲ 7.9	-	-	-	-	-	-	-	-	-	-	-	-	-	-	-	-	27.8	23.4	30.2	-	-	-	44.5	273.8	▲ 17.0	20.8	▲ 84.1	▲ 122.5
10	23.8	13.5	-	-	-	-	-	-	-	-	-	-	-	-	-	-	-	-	30.6	31.4	38.1	-	-	-	▲ 7.5	▲ 36.4	▲ 14.2	30.3	160.8	▲ 395.8
11	1.1	5.9	-	-	-	-	-	-	-	-	-	-	-	-	-	-	-	-	▲ 31.3	13.3	23.7	-	-	-	▲ 48.1	▲ 85.6	▲ 51.4	62.4	217.6	105.8
12	▲ 3.0	▲ 1.9	-	-	-	-	-	-	-	-	-	-	-	-	-	-	-	-	▲ 7.6	▲ 17.0	▲ 20.7	-	-	-	19.3	181.5	60.7	1.7	▲ 76.1	▲ 37.0
24年 1月	4.7	0.8	-	-	-	-	-	-	-	-	-	-	-	-	-	-	-	-	18.3	58.3	51.4	-	-	-	▲ 37.6	▲ 54.0	▲ 10.6	▲ 11.1	▲ 45.4	7.8
2	▲ 11.7	▲ 13.7	-	-	-	-	-	-	-	-	-	-	-	-	-	-	-	-	▲ 10.5	▲ 27.5	▲ 32.9	-	-	-	39.1	30.4	27.5	▲ 7.5	▲ 18.9	▲ 13.6
3	10.5	8.1	-	-	-	-	-	-	-	-	-	-	-	-	-	-	-	-	5.9	13.1	21.9	-	-	-	▲ 4.9	▲ 2.4	11.4	10.4	7.7	▲ 27.2
4	2.1	8.2	-	-	-	-	-	-	-	-	-	-	-	-	-	-	-	-	6.0	4.2	▲ 5.5	-	-	-	10.9	3.1	25.0	▲ 49.5	▲ 4.7	20.5
5	▲ 8.4	▲ 10.2	-	-	-	-	-	-	-	-	-	-	-	-	-	-	-	-	▲ 1.8	▲ 28.7	10.2	-	-	-	50.4	65.6	14.5	92.7	327.2	▲ 31.6
6	1.1	4.5	-	-	-	-	-	-	-	-	-	-	-	-	-	-	-	-	3.7	23.8	▲ 47.4	-	-	-	▲ 21.8	2.1	▲ 2.1	▲ 7.1	▲ 85.6	▲ 35.1
7	3.3	1.7	-	-	-	-	-	-	-	-	-	-	-	-	-	-	-	-	10.8	28.2	179.4	-	-	-	▲ 10.8	▲ 52.5	▲ 22.8	▲ 23.4	1966.3	31.1
8	0.0	▲ 5.3	-	-	-	-	-	-	-	-	-	-	-	-	-	-	-	-	▲ 6.1	▲ 2.8	▲ 31.4	-	-	-	▲ 2.1	6.1	7.3	37.9	▲ 24.3	51.3
9	▲ 15.0	▲ 5.2	-	-	-	-	-	-	-	-	-	-	-	-	-	-	-	-	▲ 22.8	▲ 12.7	▲ 19.2	-	-	-	▲ 20.1	▲ 38.4	▲ 6.7	▲ 4.6	21.6	121.3
10	0.4	2.9	-	-	-	-	-	-	-	-	-	-	-	-	-	-	-	-	▲ 3.9	▲ 5.5	4.5	-	-	-	▲ 40.8	▲ 162.0	34.1	▲ 37.2	▲ 39.0	▲ 46.0
11	18.2	20.1	-	-	-	-	-	-	-	-	-	-	-	-	-	-	-	-	12.0	▲ 29.8	▲ 19.9	-	-	-	156.2	▲ 393.3	12.7	23.0	▲ 42.0	▲ 36.4
12	5.4	▲ 3.9	-	-	-	-	-	-	-	-	-	-	-	-	-	-	-	-	14.9	74.7	12.5	-	-	-	▲ 23.2	▲ 49.6	▲ 44.9	▲ 25.7	311.5	38.8
25年 1月	▲ 5.1	▲ 4.5	-	-	-	-	-	-	-	-	-	-	-	-	-	-	-	-	▲ 3.4	▲ 20.0	19.8	-	-	-	31.2	67.0	114.8	83.4	▲ 59.8	▲ 17.0
2	8.8	6.8	-	-	-	-	-	-	-	-	-	-	-	-	-	-	-	-	5.1	7.1	▲ 10.3	-	-	-	▲ 1.4	▲ 9.6	▲ 4.3	16.9	▲ 58.8	67.9
3	▲ 10.0	▲ 14.3	-	-	-	-	-	-	-	-	-	-	-	-	-	-	-	-	▲ 8.7	▲ 4.5	▲ 9.3	-	-	-	▲ 21.1	29.6	▲ 24.4	▲ 33.8	▲ 73.5	18.8
4	8.3	14.9	-	-	-	-	-	-	-	-	-	-	-	-	-	-	-	-	16.1	32.9	45.2	-	-	-	▲ 19.0	▲ 30.5	▲ 29.5	▲ 3.4	216.3	▲ 47.8
5	10.7	8.8	-	-	-	-	-	-	-	-	-	-	-	-	-	-	-	-	14.2	27.7	6.2	-	-	-	42.4	▲ 32.7	64.0	38.5	172.1	20.3
6	▲ 0.1	▲ 6.1	-	-	-	-	-	-	-	-	-	-	-	-	-	-	-	-	▲ 8.0	▲ 17.1	19.8	-	-	-	▲ 13.3	56.7	11.2	▲ 68.6	▲ 41.1	129.6
7	▲ 3.6	▲ 7.0	-	-	-	-	-	-	-	-	-	-	-	-	-	-	-	-	0.7	▲ 19.2	▲ 19.7	-	-	-	28.7	24.6	18.8	212.0	▲ 23.0	24.5
8	7.6	15.6	-	-	-	-	-	-	-	-	-	-	-	-	-	-	-	-	11.7	28.7	33.1	-	-	-	5.2	23.9	11.4	▲ 5.7	▲ 65.9	▲ 66.5
9	31.0	75.0	-	-	-	-	-	-	-	-	-	-	-	-	-	-	-	-	▲ 3.4	▲ 5.4	▲ 26.4	-	-	-	14.6	3.1	35.4	35.4	69.0	8.7
10	▲ 15.3	▲ 26.3	-	-	-	-	-	-	-	-	-	-	-	-	-	-	-	-	▲ 0.2	▲ 1.0	0.2	-	-	-	▲ 31.0	18.9	▲ 50.0	▲ 19.6	▲ 15.1	45.4
11	▲ 22.1	▲ 35.6	-	-	-	-	-	-	-	-	-	-	-	-	-	-	-	-	▲ 3.5	▲ 5.9	4.9	-	-	-	12.1	▲ 30.8	12.8	▲ 33.4	▲ 34.3	26.5
12	4.4	3.4	-	-	-	-	-	-	-	-	-	-	-	-	-	-	-	-	7.0	▲ 3.7	14.0	-	-	-	30.9	31.2	52.8	55.5	26.1	▲ 47.1
26年 1月	5.3	6.7	-	-	-	-	-	-	-	-	-	-	-	-	-	-	-	-	▲ 13.4	7.8	▲ 12.2	-	-	-	▲ 36.3	▲ 3.6	▲ 35.0	▲ 45.6	▲ 72.7	107.1
2	5.4	▲ 18.3	-	-	-	-	-	-	-	-	-	-	-	-	-	-	-	-	28.6	3.1	2.0	-	-	-	94.0	203.3	▲ 35.1	43.2	368.8	120.9
3	▲ 26.3	▲ 22.8	-	-	-	-	-	-	-	-	-	-	-	-	-	-	-	-	▲ 6.3	0.1	▲ 5.4	-	-	-	▲ 22.1	▲ 5.0	1.2	42.9	6.2	▲ 83.6
4	142.2	110.4	-	-	-	-	-	-	-	-	-	-	-	-	-	-	-	-	316.4	448.8	73.8	-	-	-	38.5	▲ 55.3	81.6	▲ 1.1	212.4	10.7
5	▲ 37.8	▲ 22.7	-	-	-	-	-	-	-	-	-	-	-	-	-	-	-	-	▲ 65.3	▲ 66.8	43.3	-	-	-	▲ 1.1	▲ 17.3	50.5	▲ 7.3	▲ 1.6	141.9
6	▲ 7.2	▲ 0.8	-	-	-	-	-	-	-	-	-	-	-	-	-	-	-	-	▲ 6.8	▲ 19.0	▲ 56.9	-	-	-	▲ 18.2	97.6	▲ 38.4	▲ 7.4	▲ 48.7	▲ 61.5
7	12.3	14.3	-	-	-	-	-	-	-	-	-	-	-	-	-	-	-	-	▲ 4.4	▲ 13.6	15.4	-	-	-	8.9	▲ 5.9	30.8	▲ 55.2	27.6	239.5
8	▲ 6.8	▲ 22.1	-	-	-	-	-	-	-	-	-	-	-	-	-	-	-	-	▲ 14.5	▲ 0.3	▲ 22.0	-	-	-	▲ 22.5	▲ 16.0	▲ 51.6	290.0	3.3	73.8

注) ・民間の発注者分類ごとの数値
・国機関のうち、公団・事業団、政府関連企業 の数値

上記のものにつきましては、2003年4月から発注者分類の変更があったため、季節調整値を算出しておりません。よって、季節調整替えもできないため、値はありません。