

## 令和元年 1 2 月の住宅着工の動向について

- ・ 令和元年 1 2 月の住宅着工戸数は 7 2, 1 7 4 戸で、前年同月比で 7. 9 % 減となった。また、季節調整済年率換算値では 8 5. 2 万戸（前月比 0. 5 % 増）となった。
- ・ 住宅着工の動向については、前年同月比で 6 か月連続の減少となっており、利用関係別にみると、前年同月比で持家、貸家、分譲住宅ともに減となった。
- ・ 引き続き、今後の動向をしっかりと注視していく必要がある。

### (持家)

前年同月比では 5 か月連続の減少（前年同月比 8. 7 % 減、季節調整値の前月比では 1. 7 % 減）。

### (貸家)

前年同月比では 1 6 か月連続の減少（前年同月比 1 0. 3 % 減、季節調整値の前月比では 0. 4 % 減）。

### (分譲住宅)

前年同月比では 2 か月連続の減少（前年同月比 5. 1 % 減、季節調整値の前月比では 2. 2 % 増）。

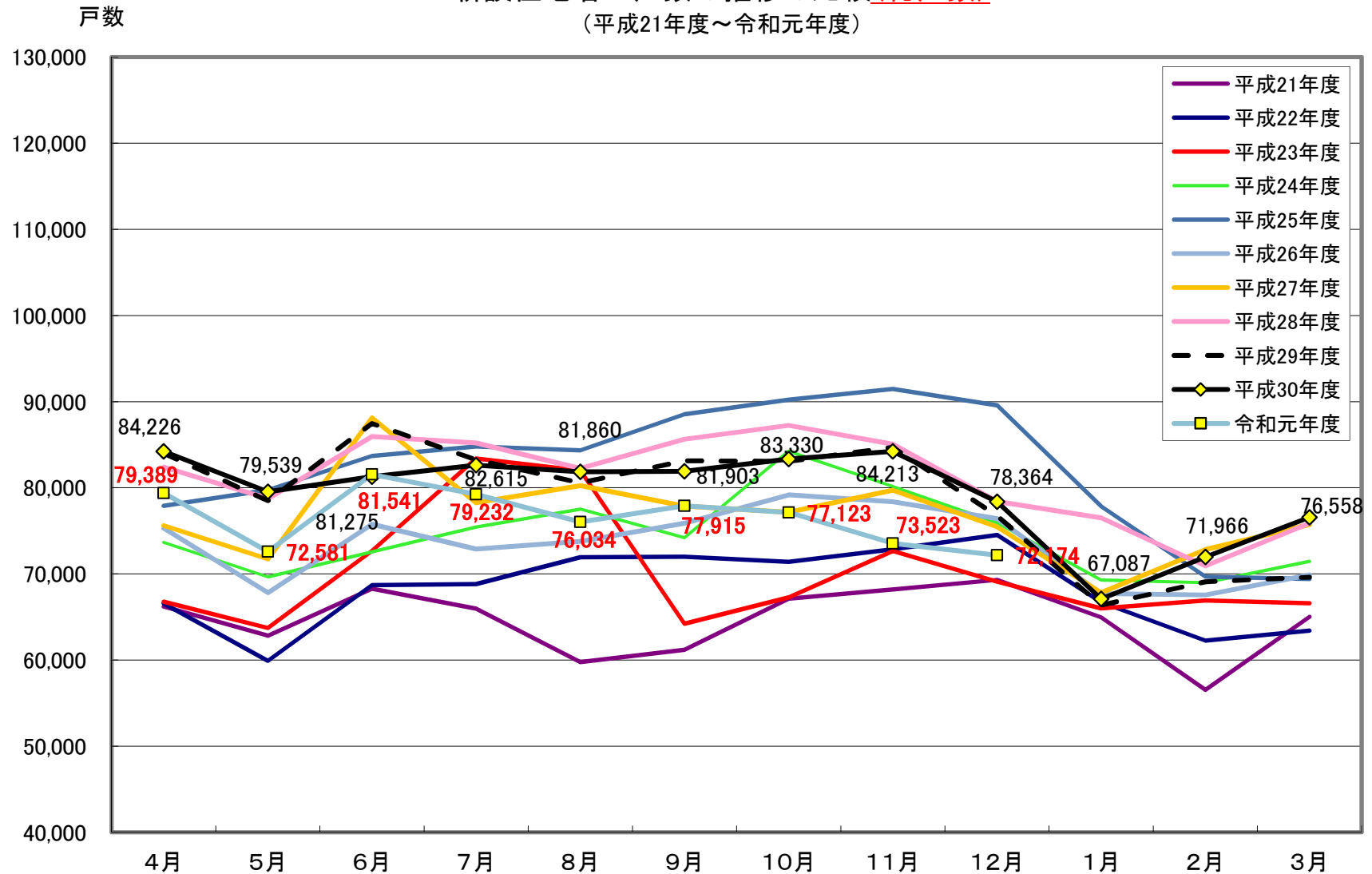
#### ・ 分譲マンション

前年同月比では 2 か月連続の減少（前年同月比 6. 2 % 減）。

#### ・ 分譲一戸建住宅

前年同月比では 7 か月ぶりの減少（前年同月比 4. 5 % 減）。

### 新設住宅着工戸数の推移の比較(総戸数) (平成21年度～令和元年度)





季節調整済年率換算値(単位:万戸)

| 年   | 月   | 総戸数   | 持家   | 貸家   | 分譲住宅 |
|-----|-----|-------|------|------|------|
| H19 | 4   | 127.9 | 34.2 | 52.9 | 37.5 |
|     | 5   | 120.2 | 33.0 | 53.1 | 32.8 |
|     | 6   | 135.8 | 34.0 | 60.0 | 42.2 |
|     | 7   | 93.6  | 26.5 | 39.9 | 27.0 |
|     | 8   | 72.0  | 25.5 | 28.7 | 18.2 |
|     | 9   | 72.7  | 29.2 | 27.2 | 17.4 |
|     | 10  | 87.1  | 32.6 | 33.6 | 20.4 |
|     | 11  | 97.3  | 31.3 | 41.2 | 22.7 |
|     | 12  | 102.8 | 31.7 | 43.9 | 26.0 |
|     | 1   | 112.5 | 32.3 | 48.4 | 29.4 |
|     | 2   | 115.0 | 31.9 | 48.5 | 31.8 |
|     | 3   | 109.3 | 31.9 | 41.6 | 32.6 |
| H20 | 4   | 117.2 | 32.1 | 50.4 | 33.4 |
|     | 5   | 114.5 | 31.6 | 49.5 | 31.9 |
|     | 6   | 113.9 | 32.0 | 51.2 | 31.0 |
|     | 7   | 111.7 | 32.8 | 48.6 | 30.8 |
|     | 8   | 109.9 | 34.4 | 45.7 | 31.3 |
|     | 9   | 112.5 | 35.1 | 45.9 | 32.1 |
|     | 10  | 105.0 | 30.9 | 46.0 | 26.8 |
|     | 11  | 96.9  | 27.4 | 41.9 | 25.2 |
|     | 12  | 95.9  | 28.9 | 41.8 | 23.7 |
|     | 1   | 90.1  | 28.4 | 38.9 | 21.5 |
|     | 2   | 85.9  | 28.5 | 34.4 | 20.5 |
|     | H21 | 3     | 86.4 | 28.1 | 36.6 |
| 4   |     | 79.5  | 27.7 | 33.7 | 15.3 |
| 5   |     | 80.3  | 27.4 | 33.5 | 16.6 |
| 6   |     | 78.1  | 28.9 | 31.9 | 15.7 |
| 7   |     | 76.2  | 28.8 | 31.0 | 15.3 |
| 8   |     | 67.5  | 27.4 | 26.2 | 14.5 |
| 9   |     | 70.6  | 28.0 | 28.0 | 15.4 |
| 10  |     | 76.8  | 29.1 | 29.9 | 16.1 |
| 11  |     | 77.9  | 29.4 | 31.4 | 15.4 |
| 12  |     | 80.2  | 29.3 | 32.3 | 17.0 |
| 1   |     | 82.2  | 29.6 | 33.0 | 19.0 |
| H22 |     | 2     | 77.4 | 29.2 | 31.2 |
|     | 3   | 84.1  | 29.2 | 31.8 | 20.7 |
|     | 4   | 80.7  | 28.9 | 31.3 | 19.8 |
|     | 5   | 77.2  | 29.2 | 29.2 | 16.6 |
|     | 6   | 79.7  | 30.6 | 28.7 | 19.7 |
|     | 7   | 79.4  | 30.0 | 29.2 | 19.2 |
|     | 8   | 81.2  | 31.8 | 30.4 | 19.5 |
|     | 9   | 83.1  | 31.5 | 28.5 | 24.6 |
|     | 10  | 81.5  | 31.7 | 27.4 | 22.1 |
|     | 11  | 82.3  | 31.1 | 28.5 | 22.3 |
|     | 12  | 86.1  | 32.3 | 29.7 | 23.4 |
|     | H23 | 1     | 84.1 | 31.0 | 29.3 |
| 2   |     | 84.5  | 30.8 | 29.6 | 21.8 |
| 3   |     | 82.3  | 30.7 | 28.7 | 22.1 |
| 4   |     | 81.1  | 29.4 | 28.1 | 22.6 |
| 5   |     | 82.2  | 28.6 | 27.8 | 23.7 |
| 6   |     | 85.2  | 30.1 | 30.5 | 23.9 |
| 7   |     | 96.8  | 35.9 | 34.7 | 25.2 |
| 8   |     | 92.9  | 34.2 | 33.3 | 25.6 |
| 9   |     | 73.9  | 28.2 | 23.1 | 22.7 |
| 10  |     | 76.4  | 28.8 | 24.9 | 22.6 |
| 11  |     | 81.3  | 29.2 | 26.2 | 25.0 |
| 12  |     | 79.8  | 29.1 | 27.2 | 22.9 |
| H24 | 1   | 83.8  | 30.0 | 30.1 | 23.2 |
|     | 2   | 90.3  | 31.3 | 32.2 | 24.6 |
|     | 3   | 86.7  | 30.2 | 30.8 | 25.3 |
|     | 4   | 89.5  | 30.2 | 32.3 | 25.9 |
|     | 5   | 89.8  | 31.2 | 32.0 | 24.6 |
|     | 6   | 85.2  | 30.3 | 31.6 | 22.0 |
|     | 7   | 87.6  | 31.7 | 29.7 | 25.1 |
|     | 8   | 88.0  | 31.3 | 32.4 | 24.6 |
|     | 9   | 85.2  | 31.6 | 30.9 | 24.0 |
|     | 10  | 95.4  | 32.3 | 36.7 | 25.8 |
|     | 11  | 89.3  | 31.6 | 32.5 | 25.4 |
|     | 12  | 88.3  | 31.6 | 30.6 | 25.4 |
| H25 | 1   | 88.6  | 32.5 | 31.3 | 24.5 |
|     | 2   | 92.6  | 32.0 | 31.2 | 26.9 |
|     | 3   | 93.4  | 33.8 | 34.1 | 25.5 |
|     | 4   | 94.1  | 35.4 | 34.2 | 24.3 |
|     | 5   | 102.3 | 35.7 | 35.5 | 29.7 |
|     | 6   | 97.8  | 34.5 | 35.5 | 27.0 |
|     | 7   | 98.7  | 35.3 | 35.5 | 26.5 |
|     | 8   | 96.4  | 35.0 | 34.8 | 26.7 |
|     | 9   | 101.5 | 36.0 | 37.0 | 29.5 |
|     | 10  | 101.9 | 37.8 | 37.7 | 25.1 |
|     | 11  | 102.1 | 38.6 | 38.4 | 25.2 |
|     | 12  | 105.2 | 37.6 | 40.0 | 26.4 |
| H26 | 1   | 100.4 | 34.6 | 39.1 | 26.7 |
|     | 2   | 93.4  | 31.8 | 39.0 | 21.2 |
|     | 3   | 90.5  | 29.4 | 37.9 | 23.4 |
|     | 4   | 90.4  | 29.5 | 37.8 | 22.4 |
|     | 5   | 86.2  | 27.6 | 36.3 | 21.3 |
|     | 6   | 87.6  | 27.8 | 36.0 | 23.4 |
|     | 7   | 84.8  | 26.4 | 32.8 | 24.5 |
|     | 8   | 85.2  | 27.3 | 33.7 | 24.1 |
|     | 9   | 87.0  | 27.7 | 34.5 | 24.9 |
|     | 10  | 89.3  | 27.0 | 36.0 | 25.5 |
|     | 11  | 87.8  | 27.2 | 35.8 | 23.8 |
|     | 12  | 90.7  | 28.1 | 36.8 | 24.1 |
| H27 | 1   | 87.6  | 28.2 | 35.9 | 23.7 |
|     | 2   | 90.7  | 28.9 | 36.0 | 23.8 |
|     | 3   | 90.9  | 29.0 | 39.6 | 22.2 |
|     | 4   | 90.0  | 28.7 | 36.6 | 23.7 |
|     | 5   | 90.5  | 28.0 | 37.1 | 24.7 |
|     | 6   | 100.8 | 29.5 | 41.1 | 30.5 |
|     | 7   | 90.9  | 28.5 | 38.8 | 22.4 |
|     | 8   | 93.4  | 28.5 | 39.5 | 25.2 |
|     | 9   | 89.4  | 28.4 | 38.8 | 22.2 |
|     | 10  | 87.1  | 27.7 | 35.2 | 23.1 |
|     | 11  | 89.8  | 28.2 | 36.9 | 24.5 |
|     | 12  | 90.4  | 26.7 | 38.7 | 23.5 |

| 年   | 月  | 総戸数  | 持家   | 貸家   | 分譲住宅 |
|-----|----|------|------|------|------|
| H28 | 1  | 87.9 | 28.3 | 38.5 | 22.2 |
|     | 2  | 98.0 | 29.0 | 40.4 | 26.4 |
|     | 3  | 98.3 | 30.2 | 40.1 | 28.1 |
|     | 4  | 97.5 | 28.9 | 42.1 | 25.4 |
|     | 5  | 98.8 | 29.1 | 42.4 | 26.1 |
|     | 6  | 97.5 | 29.6 | 42.6 | 25.7 |
|     | 7  | 98.6 | 30.1 | 43.0 | 24.6 |
|     | 8  | 96.0 | 29.9 | 43.2 | 22.2 |
|     | 9  | 98.4 | 28.9 | 43.2 | 26.1 |
|     | 10 | 99.0 | 29.2 | 43.1 | 25.5 |
|     | 11 | 96.2 | 29.1 | 42.7 | 23.9 |
|     | 12 | 95.0 | 28.6 | 40.2 | 24.8 |
| H29 | 1  | 99.2 | 28.3 | 43.6 | 28.4 |
|     | 2  | 95.4 | 29.4 | 42.9 | 21.9 |
|     | 3  | 98.3 | 29.1 | 44.6 | 24.9 |
|     | 4  | 98.9 | 29.0 | 42.6 | 25.7 |
|     | 5  | 97.9 | 29.3 | 43.0 | 24.7 |
|     | 6  | 99.0 | 28.5 | 41.6 | 29.9 |
|     | 7  | 95.9 | 28.2 | 41.3 | 26.0 |
|     | 8  | 94.1 | 27.7 | 40.7 | 25.2 |
|     | 9  | 95.6 | 28.2 | 42.0 | 24.8 |
|     | 10 | 94.5 | 27.9 | 41.2 | 24.4 |
|     | 11 | 96.0 | 28.0 | 41.5 | 25.9 |
|     | 12 | 93.7 | 28.0 | 39.5 | 24.6 |
| H30 | 1  | 86.2 | 28.4 | 39.0 | 20.6 |
|     | 2  | 92.8 | 27.5 | 40.8 | 22.7 |
|     | 3  | 90.0 | 27.9 | 39.1 | 23.9 |
|     | 4  | 98.9 | 28.4 | 41.6 | 26.8 |
|     | 5  | 98.8 | 28.5 | 40.4 | 27.4 |
|     | 6  | 91.9 | 27.5 | 40.3 | 24.3 |
|     | 7  | 95.0 | 28.2 | 40.7 | 25.9 |
|     | 8  | 95.8 | 27.8 | 41.1 | 26.1 |
|     | 9  | 94.3 | 28.3 | 39.4 | 25.9 |
|     | 10 | 95.0 | 29.1 | 38.3 | 26.7 |
|     | 11 | 95.5 | 28.7 | 38.6 | 27.5 |
|     | 12 | 96.1 | 29.4 | 36.7 | 28.7 |
| H31 | 1  | 87.2 | 29.4 | 34.3 | 24.8 |
|     | 2  | 96.7 | 30.2 | 38.7 | 25.3 |
|     | 3  | 98.9 | 30.3 | 37.4 | 31.7 |
|     | 4  | 93.1 | 31.0 | 34.6 | 25.1 |
| R1  | 5  | 90.0 | 30.3 | 33.9 | 24.2 |
|     | 6  | 92.2 | 31.1 | 35.4 | 26.2 |
|     | 7  | 91.0 | 29.0 | 34.4 | 27.2 |
|     | 8  | 89.1 | 27.4 | 33.9 | 27.7 |
|     | 9  | 89.7 | 27.4 | 32.8 | 29.5 |
|     | 10 | 87.9 | 27.5 | 32.0 | 28.7 |
|     | 11 | 83.4 | 26.7 | 31.8 | 24.6 |
|     | 12 | 85.2 | 26.7 | 32.4 | 25.2 |